



CONVENTION ON INTERNATIONAL TRADE IN ENDANGERED SPECIES
OF WILD FAUNA AND FLORA



Guidelines for transport and preparation for shipment of live wild animals and plants 1981

CITES Secretariat
International Environment House
Chemin des Anémones
CH-1219 CHATELAINE-Genève
Switzerland

Tel.: + 41 (22) 917 81 39/40
Fax: + 41 (22) 797 34 17
Email: info@cites.org
Web: <http://www.cites.org>

TABLE OF CONTENTS

TABLE OF CONTENTS	1
INTRODUCTION	3
ADVICE TO CARRIERS.....	7
PACKER'S GUIDELINES.....	13
Mm/1 Terrestrial mammals except elephants and ungulates	13
Mm/2 Terrestrial mammals – Elephants and ungulates.....	19
Mm/3 Sloths, bats, flying lemurs.....	23
Mm/4 Marine mammals – Whales, dolphins, porpoises, dugongs, manatees	27
Mm/5 Marine mammals – Seals	31
Mm/6 Mice, rats, cavies and other small mammals	35
Av/1 Water birds and large birds of non-perching habit	39
Av/2 Parrots, pigeons, passerines, near-passerines	43
Av/3 Birds of prey and owls.....	47
Rp/1 Freshwater terrapins and turtles, marine turtles	51
Rp/2 Crocodiles, alligators, caimans, gavials	55
Rp/3 Tortoises and land turtles, snakes, lizards	59
Aph/1 Amphibians, aquatic forms.....	63
Aph/2 Amphibians, terrestrial forms.....	67
Ps/1 Fishes, except those species that cannot be contained in polythene bags.....	71
Ps/2 Fishes that would damage polythene bags	75
Inv/1 Aquatic invertebrates	79
Inv/2 Terrestrial invertebrates	83
GUIDELINES FOR TRANSPORTATION OF LIVE PLANT SPECIMENS.....	87

INTRODUCTION

At the first meeting of the Conference of the Parties to the Convention on International Trade in Endangered Species of Wild Fauna and Flora (CITES) held in Berne, Switzerland, in November 1976, it was resolved that guidelines on the care and shipment of live specimens of species listed under the Convention should be prepared. Subsequently, at the meeting held in Geneva, Switzerland, in October 1977, the special working session of the Conference of the Parties recommended that these guidelines should apply to all animals and plants, not just those currently listed under the Convention. They furthermore recommended that the guidelines should cover all forms of transport, that they should be practical, and should be directed to the use of persons actually handling the consignments and also the enforcement authorities. The special working session also resolved that the guidelines should be broadly based upon the "Live Animals Regulations" of the International Air Transport Association (IATA) and that the expert resources of the Survival Service Commission of the International Union for Conservation of Nature and Natural Resources (IUCN) and other appropriate bodies should be sought. In addition, Australia, the United Kingdom of Great Britain and Northern Ireland and the United States of America offered to draft guidelines for the carriage of plant specimens. However, at the third meeting of the Parties, it was resolved that the guidelines should only apply to wild animals and that domesticated species should be excluded.

The attached guidelines, as far as transport of animals is concerned, have been produced under the auspices of the TRAFFIC Group of the SSC of IUCN as part of a consultancy for the CITES Secretariat, supported by the United Nations Environment Programme (UNEP). They were edited and translated by the CITES Secretariat, taking into account, wherever practicable, the IATA Live Animals Regulations and the detailed instructions laid down by the Parties at the special working session in document Conf. S.S 1.1. On the basis of Doc. 2.20 Annex 2, they were endorsed by the second meeting of the Conference of the Parties held at San José, Costa Rica, in March 1979 [Plen. 2.6 (Rev.)]. With regard to transport of plants, revised guidelines (Doc. 2.20.1) were adopted by the Conference [Plen. 2.12 (Rev.)]. Following the request of the meeting, subsequent comments received by the TRAFFIC Group and by the Secretariat were taken into account for the final version.

The following are guidelines only and, for their enforcement, require national legislation. So far as we can ascertain, these guidelines do not conflict with existing legislative regulations and international agreements. They are intended to incorporate basic standards for the humane transport of live animals, in a form adaptable to local legislative requirements.

The guidelines for transport of animals comprise two parts. The first is intended for shipping agents, airline staff, ship's personnel, railway staff and any others who may be involved in the handling and checking of live animal consignments. It consists of a three part advice to carriers, covering various aspects of the animals' welfare, transport arrangements and the design and construction of containers.

The second section is intended for such person or persons who are directly responsible for providing the containers and for making the advance arrangements for the transport of wild animals. This section consists of 18 packer's guidelines covering the following grouping of animals:

Mm/1	Terrestrial mammals except elephants and ungulates
Mm/2	Terrestrial mammals – Elephants and ungulates
Mm/3	Sloths, bats, flying lemurs
Mm/4	Marine mammals – Whales, dolphins, porpoises, dugongs, manatees
Mm/5	Marine mammals – Seals
Mm/6	Mice, rats, cavies and other small mammals
Av/1	Water birds and large birds of non-perching habit
Av/2	Parrots, pigeons, passerines, near-passerines
Av/3	Birds of prey and owls
Rp/1	Freshwater terrapins and turtles, marine turtles
Rp/2	Crocodiles, alligators, caimans, gavials
Rp/3	Tortoises and land turtles, snakes, lizards
Aph/1	Amphibians, aquatic forms
Aph/2	Amphibians, terrestrial forms
Ps/1	Fishes, except those species that cannot be contained in polythene bags
Ps/2	Fishes that would damage polythene bags
Inv/1	Aquatic invertebrates
Inv/2	Terrestrial invertebrates

In accordance with the Resolutions of the Parties referred to above, these packers' guidelines have been designed to obviate the inclusion of any dimensions or specifications as to the precise materials that should be used in the construction of the containers. Scope is thus given for the use of suitable local materials and latitude is given to the person or persons responsible for the provisions of the containers to design these in such a manner that they are suitable for the size and number of animals to be housed. The sketches incorporated in these guidelines have been designed so as to give a clear indication of the relative size of the containers to the animals to be housed.

The draft guidelines for the transport of animals were prepared under the direction of Bill Jordan, Chief Wildlife Officer of The Royal Society for the Prevention of Cruelty to Animals, by Charles Harley, with the assistance of Tony Sillars of the RSPCA, Tim Inskipp and John A. Burton of TRAFFIC. The drawings are by Vivienne Lawton. The following have been consulted, many of them extensively, and their cooperation is gratefully acknowledged; their inclusion does not imply any endorsement of the guidelines:

- David Ball, Curator of Reptiles, Zoological Society of London
- Jon Barzdo, Chairman of the Information Sub-Committee, The Association of British Wild Animal Keepers

- Colin P. Booty, Wildlife Officer, The Royal Society for the Prevention of Cruelty to Animals, National Headquarters
- L.A. Carter, International Society for the Protection of Animals
- Gerald Clough, Environment Physiologist, Medical Research Council, Laboratory Animals Centre, Carshalton, Surrey
- John E. Cooper, BVSc, The Hawk Trust, Hungerford, Berkshire
- Martin Corbett, Pet Trade Association, Importer of Tropical and Cold Water Fish
- Don D. Farst, Director, Gladys Porter Zoo, Brownsville, Texas
- John Griffin, Director, Xenopus Ltd., Biological Suppliers – Amphibians
- Clyde A. Hill, Curator of Conservation, Zoological Society of San Diego
- Rene E. Honegger, Curator of Herpetology, Zürich Zoo
- Oliphant F. Jackson, Comparative Biology Unit, Royal London Free Hospital
- David Jones, Chief Veterinary Officer, Zoological Society of London
- William J. Jordan, Chief Wildlife Officer, Royal Society for the Prevention of Cruelty to Animals, National Headquarters
- Graham E. Joss, Veterinary Consultant to British Airways
- Michael F. Keat, Manager of Cargo Department, Overseas Containers Ltd., London
- Victor J.A. Manton, Curator, Zoological Society of London
- Colin Platt, Field Director, International Society for the Protection of Animals, London
- Stephen Pollock, Education Department, The Association of British Wild Animal Keepers
- Nicholas Polunin, The Zoological Laboratory, University of Cambridge
- R.J. Roberts, Unit of Aquatic Pathobiology, University of Stirling
- Richard Straton, Chairman, The Association of British Wild Animal Keepers
- William Timmis, North of England Zoological Society
- Simon Townson, British Herpetological Society
- Wilhelm H. Dudok van Heel, Dolfinarium Harderwijk
- Paul H. Vodden, Assistant Wildlife Officer, Royal Society for the Prevention of Cruelty to Animals, National Headquarters
- Neville Whittaker, Manager, RSPCA Airport Hostel for Animals, London Airport
- David B. Wilkins, Headquarters Veterinary Officer, Royal Society for the Prevention of Cruelty to Animals, National Headquarters.

In addition to the foregoing, several CITES Management Authorities and certain individuals were consulted, also subsequent to the second meeting of the Parties in connection with the packers' guidelines.

Financial support for the preparation of the guidelines was provided by The Royal Society for the Prevention of Cruelty to Animals. Facilities for their preparation were provided by TRAFFIC and the RSPCA. Final editing, translation, typing and reproduction work was carried out by the CITES Secretariat. Publication was sponsored by the United Nations Environment Programme, in the context of a consultancy for the CITES Secretariat, funded under UNEP/IUCN Project FP/1104-01-76.

ADVICE TO CARRIERS

1. General welfare

- 1.1 Animals should have priority over merchandise.
- 1.2 Generally, only animals that are in good health should be transported, but there may be occasions when it may be necessary, in the animals' interest, for them to travel to a location where the appropriate treatment can be given. On such occasions it is probable that the animal will be accompanied by a qualified veterinarian or trained attendant.
- 1.3 Pregnant animals, or animals that are still dependent on their mother, should not be transported, but there are exceptions to this. It is not always possible to ascertain if an animal is pregnant; certain species may safely be transported in the early stages of pregnancy; it may be in the best interests of an animal for it to be moved to a location where conditions are more suitable for it to give birth to its young. Females of many species are pregnant for most of their lives and it is, therefore, not practicable to avoid shipping them when they are in this condition. It is clearly inadvisable to transport animals that are still dependent on their mothers, but there may be sound reasons for doing so.
- 1.4 Sedation is inadvisable, as the side-effects are still not fully known and, furthermore, animals that are in a lethargic state are very vulnerable to injury if violent movement of the aircraft, ship, lorry or train is experienced. If there are exceptional circumstances which merit sedation, then a qualified veterinarian should normally accompany the animal.
- 1.5 Generally, animals of different species should not be housed in the same container, but there are exceptions to this. Compatibility depends on several factors, such as sex, state of maturity, physical size and the nature of the animals concerned. Furthermore, animals of the same species should not be housed in the same container unless it is known that they are compatible with one another. Under certain conditions each unit of a fully partitioned container can be treated as a separate container.
- 1.6 The handling of animals should only be resorted to when absolutely necessary, i.e. in cases of sickness or the removal of carcasses. Handling is very disturbing to the animals and, furthermore, there is a real risk of infection, as many animals are carriers of diseases that can be passed on to humans.
- 1.7 Dealing with sickness or injury during transport depends on a number of factors. If sickness or injury occurs during an air journey, it may not be possible to take any action, as the animals may be housed in the baggage hold of the aircraft, and the animals' condition may only be observed on landing. On arrival at an airport, the nearest veterinarian or, in the case of some exotic species, zoo should be

contacted. A similar course of action would apply for journeys by sea or land – action would have to be taken without delay at the first stop.

- 1.8 Humane destruction during transport is, again, a matter that depends on several factors. Destruction should only be resorted to on the advice of either a veterinarian, or a person who has experience of the species in question. In the event of danger to human life, due to behaviour of an animal, then the captain of the aircraft or ship will take such action as he deems necessary, in the interests of safety.
- 1.9 The removal of sick and dead animals from containers is, normally, only possible at stops, except in the case of sea voyages when carcasses could be disposed of and other accommodation could possibly be found for sick animals. However, the removal of carcasses is a matter which very much depends on circumstances. In some cases, particularly on very short journeys, it may be advisable to leave dead animals in their containers, rather than disturb the others; this particularly applies to birds. On the other hand, many airlines will not accept containers that house any dead animals. It is important that veterinary advice, or advice from a person experienced in the handling and care of the species, should be sought before a carcass is disposed of, to establish the cause of death, and to establish whether any infectious disease is involved.
- 1.10 Arrangements for feeding and watering will depend on the species of animal involved, and the duration of the journey. For lengthy journeys by land or sea, full facilities should be provided for adequate food. An adequate supply of water is essential for most species, and steps should be taken to ensure that there is no danger of drowning.
- 1.11 Some fishes, reptiles, amphibians and invertebrates are able to survive without distress for long periods without food, and some reptiles, amphibians and invertebrates survive for long periods without water. Furthermore, it may be advisable to withhold food for 24 hours before shipment, as this minimizes pollution of the water or packing material involved for transport.
- 1.12 When fishes are undergoing lengthy journeys, great attention should be paid to the water temperature, and every effort made to keep this within the range specified on the labelling. Also, it may be necessary to re-oxygenate the water for certain species, using the equipment provided on the container.
- 1.13 To avoid cross-infection, and for health and hygiene reasons, human contact with animals should be avoided. Animals, therefore, should not be housed near foodstuffs or in places to which unauthorized persons have access.
- 1.14 No animal should be transported with radioactive material or other substances dangerous to health.
- 1.15 Containers should be secured to the aircraft, rail wagon, lorry or ship to avoid any possible movement and, when being handled, it is important that every care should be taken to ensure that the containers are kept in a horizontal position.

2. Advance arrangements for transport



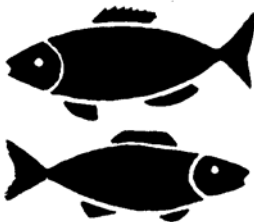

- 2.1 When animals are being transported over long distances, and will be passing from one climatic zone to another, it is important that care should be taken to plan the journey so that animals are not suddenly moved to a country having a contrasting climate to that to which they are accustomed, unless a controlled environment is available.
- 2.2 Great distress can be caused to animals due to prolonged transit stops at airports, ports or marshalling yards. It is, therefore, most important that, on occasions when these transit stops are likely to occur, proper arrangements be made in advance to ensure that they are not subjected to extremes of temperature. On aircraft, the heating and air conditioning systems are frequently shut down on such occasions, and arrangements would therefore have to be made, either for the animals to be off-loaded and held in more suitable conditions until the journey is resumed, or for emergency fans or heaters to be brought into service during the stopover.
- 2.3 Advance preparation should be made for any necessary quarantine measures or other animal health regulations at the ports of intermediate stops or final destination.
- 2.4 Animal consignments should be collected promptly at their final destination. However, in the event of unanticipated delay, the help of a veterinarian, local animal welfare organization, or person experienced in the care and handling of the animals concerned, should be obtained. If live animals have to be left for prolonged periods in airports, ports, railway yards, etc., they should be housed in places to which unauthorized persons do not have access. Animals that are already under considerable stress, as a result of being transported, suffer great distress through unnecessary interference by curious members of the public. Crated animals should be kept away from direct exposure to the sun and inappropriate temperatures.
- 2.5 Cash on delivery facilities should not be used for animals.

3. Containers

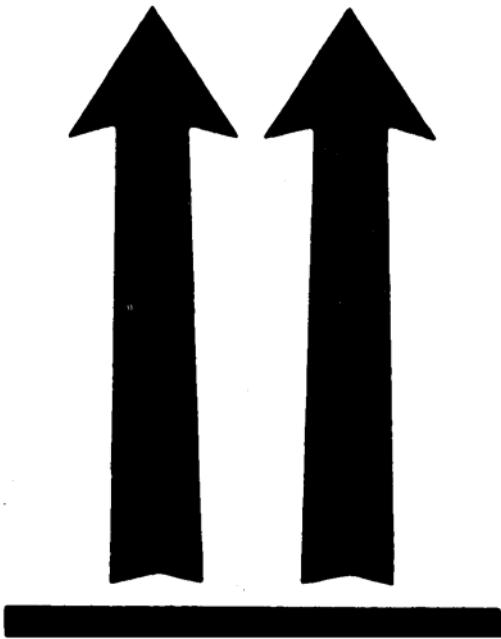
- 3.1 In order to allow for the use of suitable local materials, no precise specification has been laid down as to the materials from which containers should be constructed. For many animals, the preferred material will be timber, but such materials as bamboo, cardboard, hardboard, plastics and metal, may often be suitable for the construction of containers.
- 3.2 The use of expanded polystyrene is recommended for reptiles, amphibians, fishes and invertebrates, as this material has excellent heat insulation properties. When considerable mechanical strength is necessary, then a rigid outer casing should be provided.

- 3.3 In order to ensure sufficient rigidity and strength, it is almost always necessary to build containers on a framework when timber or hardboard is employed. In the case of certain large animals, the use of bolts and nuts in place of screws and metal reinforcement for corners, and for walls and roof, is also to be recommended.
- 3.4 It is important that all containers should have inner surfaces which are completely free of any projecting nails, screws, ends of mesh or any other sharp or jagged materials which could cause injury to the animal. Moreover, if any wood preservative or paint is used on the containers, it should not be toxic or a skin irritant.
- 3.5 For some animals a slatted or mesh floor is preferable, in order that urine and excreta may be trampled through by the animals and fall into the liquid-proof trays beneath the floor. The dimensions of the slats, and the spacing between them, will be governed by the species of animal to be housed; the spacing should be such that there is no possibility of the animals' feet being trapped.
- 3.6 Animals that have strong gnawing or clawing habits should be transported in containers, the walls of which have been lined with sheet metal or welded mesh of sufficient strength. The slatted floor should not be lined as protection against the escape of the animals is afforded by the liquid-proof trays beneath. Absorbent bedding may be used in the containers in place of a slatted floor and tray.
- 3.7 Birds travel more satisfactorily in semi-darkness and most mammals undergo less stress if a burlap or similar loose-weave cover is fitted over any mesh or bar front to the containers; this should, however, be easily removable for inspection, feeding and watering purpose. Care should be taken that ventilation is not impaired.
- 3.8 In most cases the containers are more satisfactory if sliding doors are fitted, as the ingress and egress of the animals is more easily controlled than with hinged doors.
- 3.9 One of the causes of death in animals during transport is lack of sufficient air, so great attention should be paid to the ventilation of containers. Regardless of the fact that containers may have mesh or bar fronts, ventilation holes should be provided in all walls and, in certain cases, also in the roof. The diameter of these holes should be governed by the species of animal the container is to house, and it is important that no part of the animal should be able to protrude through these holes; in the case of certain animals, these holes would require to be covered with fine mesh. However, in spite of this, careful attention should also be given to insulation.
- 3.10 An additional safeguard against animals being asphyxiated should be provided, by fitting spacer bars on all sides, top and bottom of containers. The size of the spacer bars should be governed by the container size.
- 3.11 On long journeys, many animals should be provided with suitable bedding material, however, many countries do not allow certain materials such as straw to be imported and the requirements of the receiving country should be established if this type of bedding material is to be used.

CONSIGNOR Name: Address: Tel. No: Date of despatch:		VIA DATE OF DESPATCH	DESTINATION Name: Address: Tel. No.
CONTENTS Scientific name: Common name in exporting country: Common name in importing country: Number of animals:		Carrier's official stamp	FEEDING
TEMPERATURE RANGE REQUIRED: MAX °C. _____ MIN °C. _____		SEDATION	ATTACHMENTS Duplicate details of those given on this label Copies of relevant export and import licences Valid health certificate Details of any sedation or treatment given

LIVE ANIMALS	
	
	
RUSH	

Minimum dimensions 10 x 15 cm.


DO NOT TIP

Minimum dimensions 10 x 15 cm.

PACKER'S GUIDELINES

Mm/1 – Terrestrial mammals except elephants and ungulates

1. General welfare

- 1.1 Animals should have priority over merchandise.
- 1.2¹ Only animals in good health should be transported.
- 1.3¹ Animals obviously in advanced stages of pregnancy or animals that have recently given birth should not be shipped. Infant animals incapable of feeding themselves should not be shipped unless prior arrangements have been made to feed the infant during transport if the travel will take longer than the infant's normal feeding period.
- 1.4 Sedation should be administered only in exceptional circumstances and should be carried out under the supervision of an authorized qualified veterinarian. Details of any sedation should accompany the animal.
- 1.5 Animals of different species should not be transported in the same container.
- 1.6 Unless animals of the same species are known to be compatible with one another, they should not be transported in the same container.
- 1.7 Animals should be disturbed as little as possible.
- 1.8 Animals that have become sick or that have been injured during transport should receive veterinary treatment as soon as possible and, if necessary, should be humanely destroyed. A record of any such occurrences should be kept.
- 1.9 Sick or dead animals should be removed from containers, when feasible, and a record kept.
- 1.10 Any rest periods prescribed by a veterinarian should be complied with.
- 1.11 The frequency and type of feeding and watering natural to the animals should be adhered to during transport, and should be clearly specified on the labelling.
- 1.12 An adequate supply of suitable bedding material should be provided.
- 1.13 To avoid cross-infection, and for health and hygiene reasons, human contact with animals should be avoided, and they should not be housed near foodstuffs or in places to which unauthorized persons have access.

¹ *Exceptional circumstances may arise which justify departure from this recommendation.*

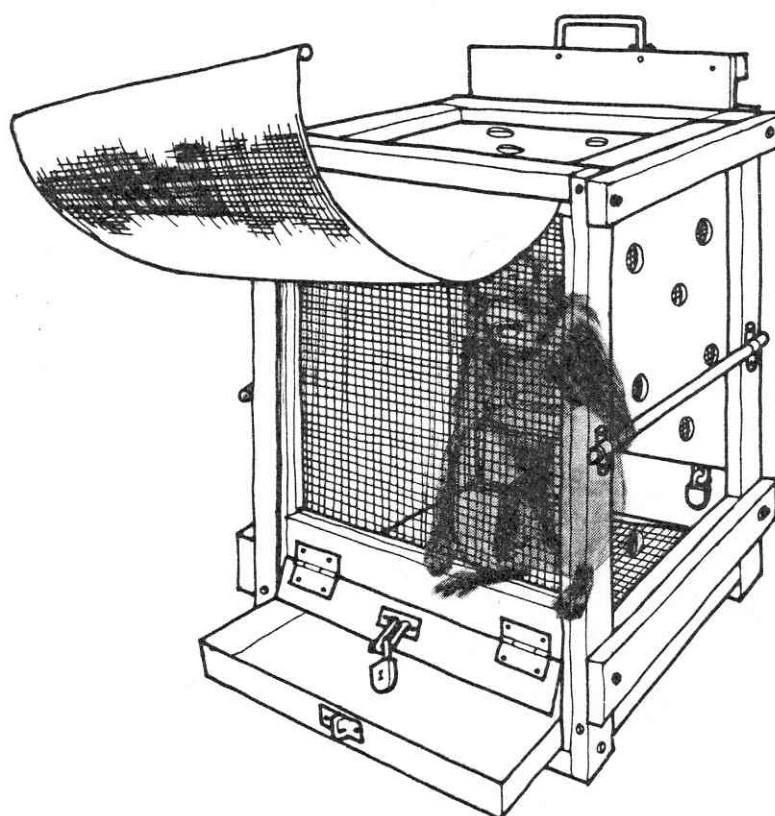
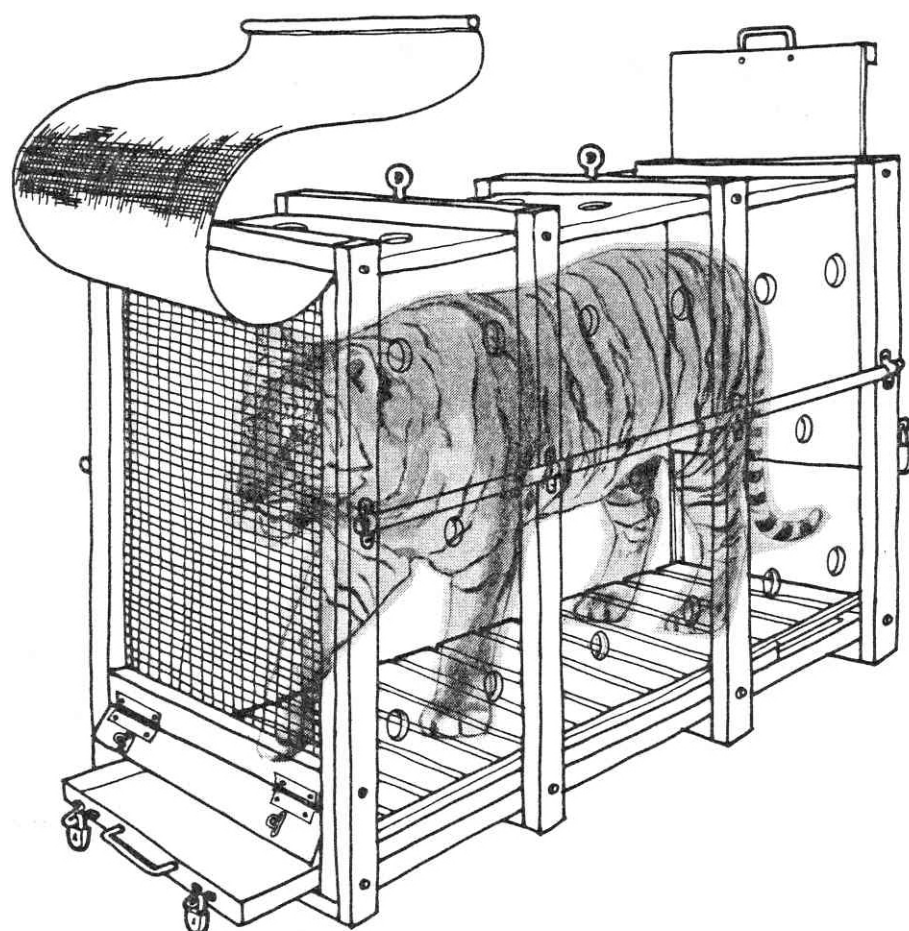
- 1.14 No animal should be transported with radioactive material or other substances dangerous to health.
- 1.15 Containers should be secured to the aircraft, rail wagon, lorry or ship to avoid any possible movement, and should at all times be maintained in a horizontal position.

2. Advance arrangements for transport

- 2.1 There should be an appropriate period for holding and conditioning of animals prior to shipment, during which they should be introduced to their containers progressively.
- 2.2 All possible precautions should be taken in advance to ensure that animals are not subjected to extremes of temperature or to draughts. This would necessitate planning their movement with due regard to the climatic conditions natural to them, and to the conditions prevailing at their final destination, and also those that will be encountered during transport. Particular attention should be paid to the facilities at any intermediate stops at airports, etc.
- 2.3 When containers are to be re-used they should be thoroughly cleaned and disinfected before and after use.
- 2.4 The estimated time of arrival should be notified in advance to the consignee, and also the route of the consignment. Adequate arrangements for its prompt collection at the final destination, and for any necessary movement at transit points, should be made in advance.
- 2.5 Should any delay in collection be anticipated, then advance arrangements should be made for the housing, feeding and watering of the animals.
- 2.6 Cash on delivery facilities should not be used.

3. Container

- 3.1 The container should be constructed of material of sufficient strength and there should be an adequate framework to ensure that it is strong enough to house the animals securely and to withstand the handling involved during transport.
- 3.2 There should be no sharp edges or projections on the inside surfaces of the container.
- 3.3 If any wood preservative or paint is used on the container, care should be taken to ensure that this is not toxic or a skin irritant.
- 3.4 Should the container be made up of several compartments, the overall size should be such that it may be handled without difficulty.



- 3.5 The floor of the container should be of slatted construction, so designed and constructed that there is no possibility of the animal's feet being trapped between the slats. For smaller animals, e.g. porcupines, rodents, armadillos, etc., the floor may be of suitable mesh. In any case, the floor should be positioned over a removable, waterproof tray with a sufficient quantity of absorbent material in the tray unless absorbent material is placed in with the animal.
- 3.6 The walls and roof should be of solid construction.
- 3.7 For strong clawing or gnawing animals, the inside of the walls should be lined with sheet metal or suitable mesh.
- 3.8 For certain animals, such as kangaroos and wallabies, the underside of the roof should be padded with an adequate thickness of soft material.
- 3.9 The front should be of mesh of suitable strength, or of metal bars, or bars of material of equal strength, and so designed and constructed that the animals are not able to come into contact with persons handling the container.
- 3.10 A burlap or similar cover should be fitted to the front in such a manner that it may be removed when necessary, care being taken not to interfere with the ventilation.
- 3.11 There should be a sliding door of adequate size, constructed of material of similar strength to the rest of the container, and provided with a secure fastening device which is not accessible to the animals.
- 3.12 An adequate, safe, external access for feeding and watering should be provided. For some animals it may be advisable to provide separate, flange-sided troughs for food and water, removable from the outside, and which have provision for closing the trough access during removal.
- 3.13 To ensure an adequate flow of air at all times, there should be additional ventilation by means of holes of a suitable size in all walls of the container. Care should be taken to ensure that these holes are of a size which prevents the animals from coming into contact with persons handling the container, and that they are not obstructed by any sheet metal or mesh lining that may be fitted.
- 3.14 Suitable lifting handles or grippers bars should be provided and, when the container will be heavily loaded, then hooks for crane slings and facilities for handling by fork-lift should also be fitted.
- 3.15 Spacer bars of adequate size should be fitted to all walls, roof and base of the container, to ensure that there is a free flow of air to the animals in the event of stacking or close stowing of cargo.

4. Labelling and documentation

Durable, waterproof labels should be provided as follows:

- 4.1 "LIVE ANIMALS – DO NOT TIP" on all sides and top.
- 4.2 "THIS WAY UP", with arrows indicating the top, on all sides.
- 4.3 Consignor's and consignee's name, address and telephone number. Box numbers should not be used as the sole address.
- 4.4 Detailed list of contents: number of animals, scientific name and common names used in the exporting and importing countries.
- 4.5 Temperature range required.
- 4.6 Required diet, and feeding and watering instructions.
- 4.7 Details of any sedation given.
- 4.8 Date on which animals were crated for transport.
- 4.9 Official stamp of carrier showing date of his receipt of consignment.

Durable, waterproof means of containing the following documents and other essential information should be firmly attached to the container:

- 4.10 Duplicate of consignor's and consignee's name, address and telephone number.
- 4.11 Duplicate list of contents as in 4.4.
- 4.12 Copies of relevant export and import licences.
- 4.13 Copy of valid health certificate issued in accordance with the requirements of the importing country.
- 4.14 Duplicate information regarding temperature range, and feeding and watering.
- 4.15 Duplicate information regarding any sedation given.

Mm/2 – Terrestrial mammals – Elephants and ungulates

1. General welfare

- 1.1 Animals should have priority over merchandise.
- 1.2¹ Only animals in good health should be transported.
- 1.3¹ Animals obviously in advanced stages of pregnancy or animals that have recently given birth should not be shipped. Infant animals incapable of feeding themselves should not be shipped unless prior arrangements have been made to feed the infant during transport if the travel will take longer than the infant's normal feeding period.
- 1.4¹ Antlered animals in velvet should not be transported.
- 1.5 Sedation should be administered only in exceptional circumstances and should be carried out under the supervision of an authorized qualified veterinarian. Details of any sedation should accompany the animal.
- 1.6 Animals of different species should not be transported in the same container.
- 1.7 Unless animals of the same species are known to be compatible with one another, they should not be transported in the same container.
- 1.8 Animals should be disturbed as little as possible.
- 1.9 Animals that have become sick or that have been injured during transport should receive veterinary treatment as soon as possible and, if necessary, should be humanely destroyed. A record of any such occurrences should be kept.
- 1.10 Sick or dead animals should be removed from containers, when feasible, and a record kept.
- 1.11 Any rest periods prescribed by a veterinarian should be complied with.
- 1.12 The frequency and type of feeding and watering natural to the animals should be adhered to during transport, and should be clearly specified on the labelling.
- 1.13 An adequate supply of suitable bedding material should be provided.
- 1.14 To avoid cross-infection, and for health and hygiene reasons, human contact with animals should be avoided, and they should not be housed near foodstuffs or in places to which unauthorized persons have access.
- 1.15 No animal should be transported with radioactive material or other substances dangerous to health.

¹ *Exceptional circumstances may arise which justify departure from this recommendation.*

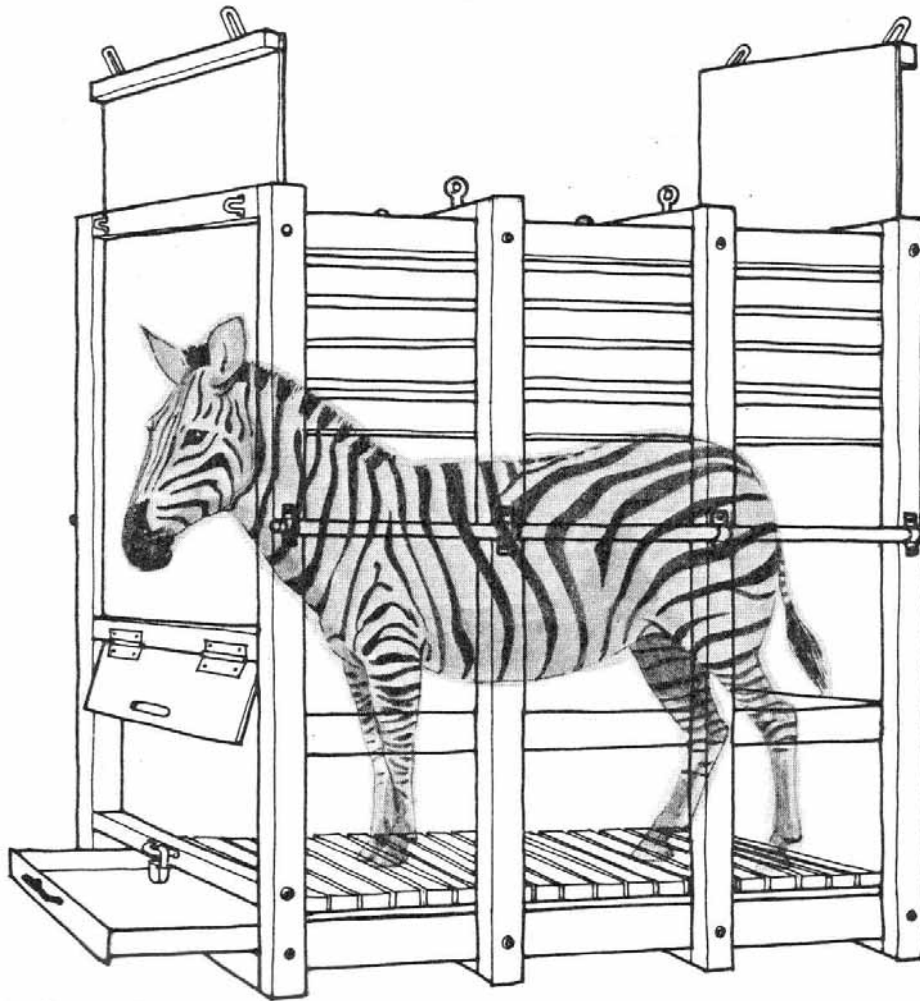
- 1.16 Containers should be secured to the aircraft, rail wagon, lorry or ship to avoid any possible movement, and should at all times be maintained in a horizontal position.

2. Advance arrangements for transport

- 2.1 There should be an appropriate period for holding and conditioning of animals prior to shipment, during which they should be introduced to their containers progressively.
- 2.2 All possible precautions should be taken in advance to ensure that animals are not subjected to extremes of temperature or to draughts. This would necessitate planning their movement with due regard to the climatic conditions natural to them, and to the conditions prevailing at their final destination, and also those that will be encountered during transport. Particular attention should be paid to the facilities at any intermediate stops at airports, etc.
- 2.3 When containers are to be re-used they should be thoroughly cleaned and disinfected before and after use.
- 2.4 The estimated time of arrival should be notified in advance to the consignee, and also the route of the consignment. Adequate arrangements for its prompt collection at the final destination, and for any necessary movement at transit points, should be made in advance.
- 2.5 Should any delay in collection be anticipated, then advance arrangements should be made for the housing, feeding and watering of the animals.
- 2.6 Cash on delivery facilities should not be used.

3. Container

- 3.1 The container should be constructed of material of adequate strength and there should be an adequate framework to ensure that it is strong enough to house the animals and to withstand the handling involved during transport. It would be preferable that only bolts and nuts are used and that metal reinforcing is used on the corners.
- 3.2 There should be no sharp edges or projections on the inside surfaces of the container.
- 3.3 If any wood preservative or paint is used on the container, care should be taken to ensure that this is not toxic or a skin irritant.
- 3.4 The dimensions of the container for large species should be such that the animal is unable to turn around or to somersault.



- 3.5 The floor of the container should be of slatted construction so designed and constructed that the spacing between the slats is such that there is no danger of the animal's feet becoming trapped.
- 3.6 There should be removable, liquid-proof trays under the slatted floor with a sufficient quantity of absorbent material unless material is placed in the container.
- 3.7 The top of the rear half of the side walls may be slatted, the spacing being such that there is no danger of the animal injuring itself due to tusks or horns becoming trapped.
- 3.8 The roof may be of slatted construction and so designed that there is no danger of the animal injuring itself due to tusks or horns becoming trapped, nor any danger of the crate being crushed inwards when lifted.
- 3.9 For some species, the inside of the walls and roof should be adequately padded with a non-abrasive material, care being taken to ensure that this does not impede ventilation.
- 3.10 There should, where practicable, be a sliding door of adequate size at each end of the container, constructed of material of similar strength to the rest of the container and provided with a secure fastening device which is not accessible to the animals.

- 3.11 For feeding and watering, adequate access by means of removable slats on the front of the container should be provided.
- 3.12 Gripper bars and/or facilities for the attachment of crane slings and runners for handling by fork-lift should be provided.
- 3.13 Spacer bars of adequate size should be fitted to all walls, roof and base of the container, to ensure that there is a free flow of air to the animals in the event of stacking or close stowing of cargo.

4. Labelling and documentation

Durable, waterproof labels should be provided as follows:

- 4.1 "LIVE ANIMALS – DO NOT TIP" on all sides and top.
- 4.2 "THIS WAY UP", with arrows indicating the top, on all sides.
- 4.3 Consignor's and consignee's name, address and telephone number. Box numbers should not be used as the sole address.
- 4.4 Detailed list of contents: number of animals; scientific name and common names used in the exporting and importing countries.
- 4.5 Temperature range required.
- 4.6 Required diet, and feeding and watering instructions.
- 4.7 Details of any sedation given.
- 4.8 Date on which animals were crated for transport.
- 4.9 Official stamp of carrier showing date of his receipt of consignment.

Durable, waterproof means of containing the following documents and other essential information should be firmly attached to the container:

- 4.10 Duplicate of consignor's and consignee's name, address and telephone number.
- 4.11 Duplicate list of contents as in 4.4.
- 4.12 Copies of relevant export and import licences.
- 4.13 Copy of valid health certificate issued in accordance with the requirements of the importing country.
- 4.14 Duplicate information regarding temperature range, and feeding and watering.
- 4.15 Duplicate information regarding any sedation given.

Mm/3 – Sloths, bats, flying lemurs

1. General welfare

- 1.1 Animals should have priority over merchandise.
- 1.2¹ Only animals in good health should be transported.
- 1.3¹ Animals obviously in advanced stages of pregnancy or animals that have recently given birth should not be shipped. Infant animals incapable of feeding themselves should not be shipped unless prior arrangements have been made to feed the infant during transport if the travel will take longer than the infant's normal feeding period.
- 1.4 Sedation should be administered only in exceptional circumstances and should be carried out under the supervision of an authorized qualified veterinarian. Details of any sedation should accompany the animal.
- 1.5 Animals of different species should not be transported in the same container. Each compartment of a properly partitioned container may be considered as a separate container.
- 1.6 Unless animals of the same species are known to be compatible with one another, they should not be transported in the same container.
- 1.7 Animals should be disturbed as little as possible.
- 1.8 Animals that have become sick or that have been injured during transport should receive veterinary treatment as soon as possible and, if necessary, should be humanely destroyed. A record of any such occurrences should be kept.
- 1.9 Sick or dead animals should be removed from containers, when feasible, and a record kept.
- 1.10 Any rest periods prescribed by a veterinarian should be complied with.
- 1.11 The frequency and type of feeding and watering natural to the animals should be adhered to during transport, and should be clearly specified on the labelling.
- 1.12 To avoid cross-infection, and for health and hygiene reasons, human contact with animals should be avoided, and they should not be housed near foodstuffs or in places to which unauthorized persons have access.
- 1.13 No animal should be transported with radioactive material or other substances dangerous to health.
- 1.14 Containers should be secured to the aircraft, rail wagon, lorry or ship to avoid any possible movement, and should at all times be maintained in a horizontal position.

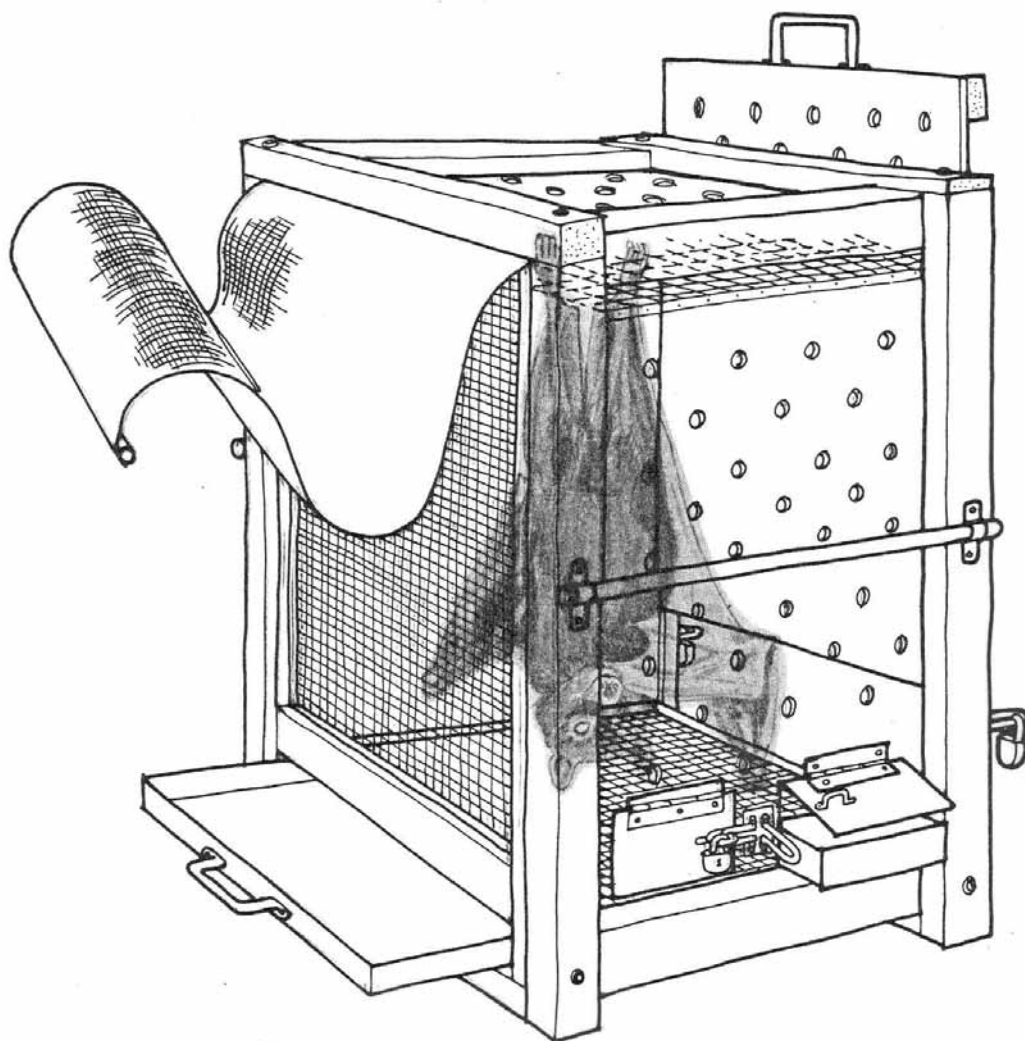
¹ *Exceptional circumstances may arise which justify departure from this recommendation.*

2. Advance arrangements for transport

- 2.1 There should be an appropriate period for holding and conditioning of animals prior to shipment, during which they should be introduced to their containers progressively.
- 2.2 All possible precautions should be taken in advance to ensure that animals are not subjected to extremes of temperature or to draughts. This would necessitate planning their movement with due regard to the climatic conditions natural to them, and to the conditions prevailing at their final destination, and also those that will be encountered during transport. Particular attention should be paid to the facilities at any intermediate stops at airports, etc.
- 2.3 When containers are to be re-used they should be thoroughly cleaned and disinfected before and after use.
- 2.4 The estimated time of arrival should be notified in advance to the consignee, and also the route of the consignment. Adequate arrangements for its prompt collection at the final destination, and for any necessary movement at transit points, should be made in advance.
- 2.5 Should any delay in collection be anticipated, then advance arrangements should be made for the housing, feeding and watering of the animals.
- 2.6 Cash on delivery facilities should not be used.

3. Container

- 3.1 The container should be constructed of wood, or of material of similar strength, and there should be an adequate framework to ensure that it is strong enough to house the animals and to withstand the handling involved during transport.
- 3.2 There should be no sharp edges or projections on the inside surfaces of the container.
- 3.3 If any wood preservative or paint is used on the container, care should be taken to ensure that this is not toxic or a skin irritant.
- 3.4 The floor of the container should be slatted, or of suitable mesh, and positioned above a removable, waterproof tray with a sufficient quantity of absorbent material. If material is placed in the container, a tray is not required.
- 3.5 The walls and roof should be of solid construction.
- 3.6 Mesh of suitable strength should be fitted under the main roof, and spaced from it in such a way that the animals may hang from it in their natural position.
- 3.7 The front should be of mesh of suitable strength, or of metal bars, or bars of material of equal strength, and so designed and constructed that the animals are not able to come into contact with persons handling the container.



- 3.8 A burlap or similar cover should be fitted to the front in such a manner that it may be removed when necessary, care being taken not to interfere with the ventilation.
- 3.9 There should be a sliding door constructed of material of similar strength to the rest of the container, and provided with a secure fastening device which is not accessible to the animals.
- 3.10 Separate flange-sided troughs for food and water, removable from the outside, and with provision for closing the trough access during removal, should be provided.
- 3.11 To ensure an adequate flow of air at all times, there should be additional ventilation by means of holes of a suitable size in all walls of the container. Care should be taken to ensure that these holes are of a size which prevents the animals from coming into contact with persons handling the container.
- 3.12 Suitable gripper bars or lifting handles should be provided.
- 3.13 Spacer bars of adequate size should be fitted to all walls, roof and base of the container, to ensure that there is a free flow of air to the animals in the event of stacking or close stowing of cargo.

4. Labelling and documentation

Durable, waterproof labels should be provided as follows:

- 4.1 "LIVE ANIMALS – DO NOT TIP" on all sides and top.
- 4.2 "THIS WAY UP", with arrows indicating the top, on all sides.
- 4.3 Consignor's and consignee's name, address and telephone number. Box numbers should not be used as the sole address.
- 4.4 Detailed list of contents: number of animals, scientific name and common names used in the exporting and importing countries.
- 4.5 Temperature range required.
- 4.6 Required diet, and feeding and watering instructions.
- 4.7 Details of any sedation given.
- 4.8 Date on which animals were crated for transport.
- 4.9 Official stamp of carrier showing date of his receipt of consignment.

Durable, waterproof means of containing the following documents and other essential information should be firmly attached to the container:

- 4.10 Duplicate of consignor's and consignee's name, address and telephone number.
- 4.11 Duplicate list of contents as in 4.4.
- 4.12 Copies of relevant export and import licences.
- 4.13 Copy of valid health certificate issued in accordance with the requirements of the importing country.
- 4.14 Duplicate information regarding temperature range, and feeding and watering.
- 4.15 Duplicate information regarding any sedation given.

Mm/4 – Marine mammals – Whales, dolphins, porpoises, dugongs, manatees

1. General welfare

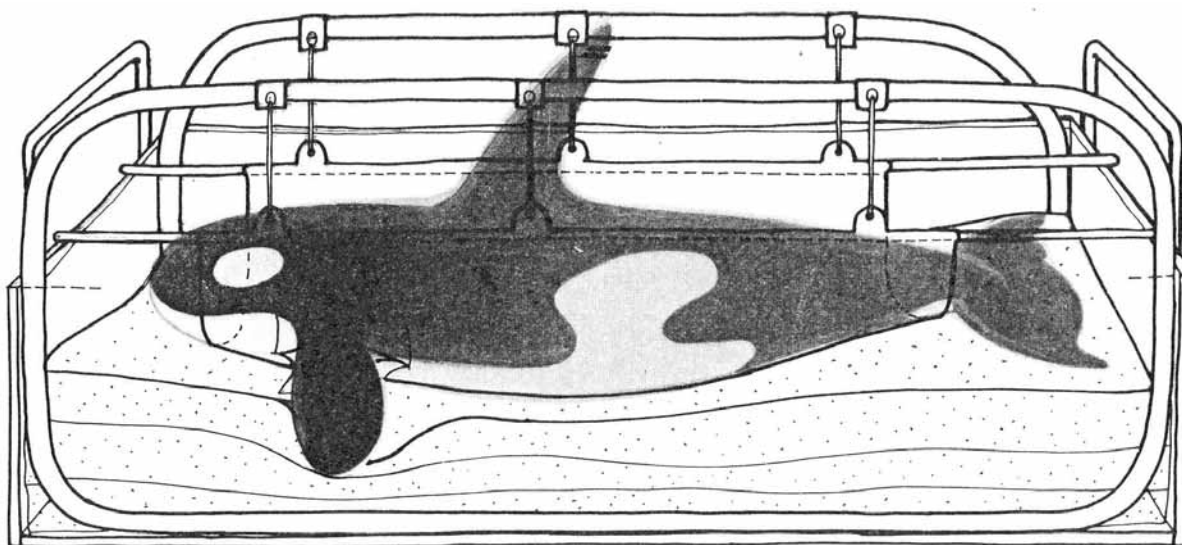
- 1.1 Animals should have priority over merchandise.
- 1.2¹ Only animals in good health should be transported.
- 1.3¹ Animals obviously in advanced stages of pregnancy or animals that have recently given birth should not be shipped. Infant animals incapable of feeding themselves should not be shipped unless prior arrangements have been made to feed the infant during transport if the travel will take longer than the infant's normal feeding period.
- 1.4 Sedation should be administered only in exceptional circumstances and on the advice of a person experienced in the handling and care of these animals. It should be administered only under the supervision of an authorized qualified veterinarian, and details of the sedation given should accompany the animal.
- 1.5 As these animals require constant attention, it would be essential that at least one trained attendant accompanies the consignment. If several animals are being transported, it would be necessary for more than one trained attendant to accompany them.
- 1.6 Animals should be disturbed as little as possible.
- 1.7 Animals that have become sick or that have been injured during transport should receive veterinary treatment as soon as possible.
- 1.8 The frequency and type of feeding natural to the animals should be adhered to during transport, and should be clearly specified on the labelling.
- 1.9 No animal should be transported with radioactive material or other substances dangerous to health.
- 1.10 When animals are transported in hot climates, an adequate supply of ice should be available, to ensure that the animal's temperature is maintained at an acceptably cool level.
- 1.11 If feasible, animals should be transported in a transverse position; if this is not practicable, then they should travel in a head-first position.
- 1.12 Containers should be secured to the aircraft, rail wagon, lorry or ship to avoid any possible movement, and should at all times be maintained in a horizontal position.
- 1.13 On no account should containers be stacked.

¹ *Exceptional circumstances may arise which justify departure from this recommendation.*

2. Advance arrangements for transport

- 2.1 All possible precautions should be taken in advance to ensure that animals are not subjected to high temperatures or to draughts. This would necessitate planning their movement with due regard to the climatic conditions natural to them, and to the conditions prevailing at their final destination, and also those that will be encountered during transport. Particular attention should be paid to the facilities at any intermediate stops at airports, etc.
- 2.2 When containers are to be re-used they should be thoroughly cleaned and disinfected before and after use.
- 2.3 The estimated time of arrival should be notified in advance to the consignee, and also the route of the consignment. Adequate arrangements for its prompt collection at the final destination, and for any necessary movement at transit points, should be made in advance.
- 2.4 Should any delay in collection be anticipated, then advance arrangements should be made for the housing and feeding of the animals.
- 2.5 Cash on delivery facilities should not be used.

3. Container



- 3.1 The container must be leakproof and should therefore be constructed of suitable corrosion proof metal, or heavy duty plastic of sufficient strength.
- 3.2 The container should be strong enough to house the animal and to withstand the handling involved during transport.
- 3.3 The container should be of sufficient width to ensure that there is adequate clearance from the animal's flippers.

- 3.4 The container should be open at the top.
- 3.5 Facilities for handling by crane or fork-lift should be provided.

4. Packing

- 4.1 The animal should be placed in a suitable canvas sling and lowered onto a very deep, damp foam mattress placed in the container. The foam mattress should be cut away as necessary to accommodate the animal's flippers and fins. The sling should be left loose under the animal during transport.
- 4.2 Water should then be added to the container so that approximately one half to two thirds of the animal is immersed. Mechanical hand-sprayer should be available for use when required.
- 4.3 The parts of the animal that are exposed should be covered with lanoline, or a similar ointment, care being taken to ensure that there is no obstruction to the animal's blow hole.
- 4.4 For short journeys involving small specimens, they may be transported in a canvas sling without a foam mattress, provided that hand sprays are available to keep the animal's skin moistened and cool.

5. Labelling and documentation

Durable, waterproof labels should be provided as follows:

- 5.1 "LIVE ANIMALS – DO NOT TIP" on all sides.
- 5.2 "THIS WAY UP", with arrows indicating the top, on all sides.
- 5.3 Consignor's and consignee's name, address and telephone number. Box numbers should not be used as the sole address.
- 5.4 Detailed list of contents: number of animals; scientific name and common names used in the exporting and importing countries.
- 5.5 Temperature range required.
- 5.6 Required diet and feeding instructions.
- 5.7 Details of any sedation given.
- 5.8 Date on which animals were crated for transport.
- 5.9 Official stamp of carrier showing date of his receipt of consignment.

Durable, waterproof means of containing the following documents and other essential information should be firmly attached to the container:

- 5.10 Duplicate of consignor's and consignee's name, address and telephone number.
- 5.11 Duplicate list of contents as in 5.4.
- 5.12 Copies of relevant export and import licences.
- 5.13 Copy of valid health certificate issued in accordance with the requirements of the importing country.
- 5.14 Duplicate information regarding temperature range and feeding.
- 5.15 Duplicate information regarding any sedation given.

Mm/5 – Marine mammals – Seals

1. General welfare

- 1.1 Animals should have priority over merchandise.
- 1.2¹ Only animals in good health should be transported.
- 1.3¹ Animals obviously in advanced stages of pregnancy or animals that have recently given birth should not be shipped. Infant animals incapable of feeding themselves should not be shipped unless prior arrangements have been made to feed the infant during transport if the travel will take longer than the infant's normal feeding period.
- 1.4 Sedation should be administered only in exceptional circumstances and should be carried out under the supervision of an authorized qualified veterinarian. Details of any sedation should accompany the animal.
- 1.5 Animals of different species should not be transported in the same container.
- 1.6 Unless animals of the same species are known to be compatible with one another, they should not be transported in the same container.
- 1.7 Animals should be disturbed as little as possible.
- 1.8 Animals that have become sick or that have been injured during transport should receive veterinary treatment as soon as possible and, if necessary, should be humanely destroyed. A record of any such occurrences should be kept.
- 1.9 Sick or dead animals should be removed from containers, when feasible, and a record kept.
- 1.10 Any rest periods prescribed by a veterinarian should be complied with.
- 1.11 The frequency and type of feeding and watering natural to the animals should be adhered to during transport, and should be clearly specified on the labelling.
- 1.12 To avoid cross-infection, and for health and hygiene reasons, human contact with animals should be avoided, and they should not be housed near foodstuffs or in places to which unauthorized persons have access.
- 1.13 No animal should be transported with radioactive material or other substances dangerous to health.
- 1.14 Containers should be secured to the aircraft, rail wagon, lorry or ship to avoid any possible movement, and should at all times be maintained in a horizontal position.

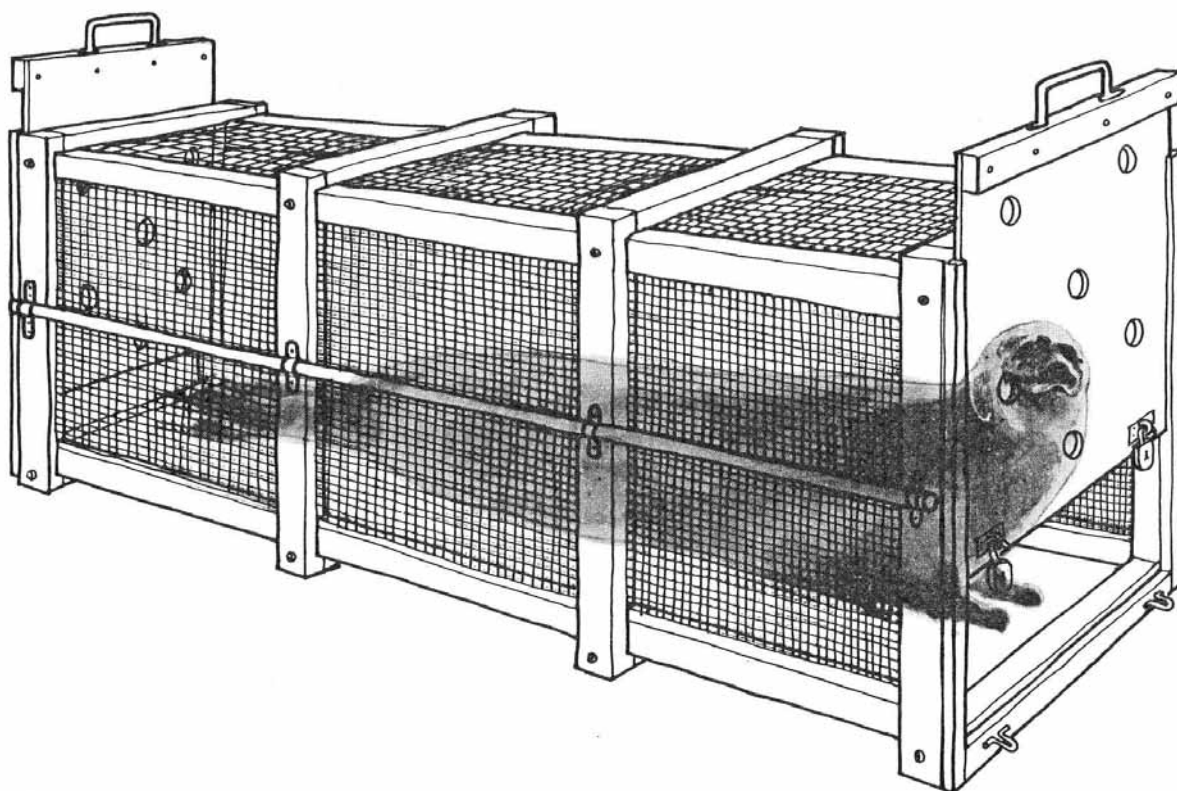
¹ *Exceptional circumstances may arise which justify departure from this recommendation.*

2. Advance arrangements for transport

- 2.1 There should be an appropriate period for holding and conditioning of animals prior to shipment, during which they should be introduced to their containers progressively.
- 2.2 All possible precautions should be taken in advance to ensure that animals are not subjected to extremes of temperature or to draughts. This would necessitate planning their movement with due regard to the climatic conditions natural to them, and to the conditions prevailing at their final destination, and also those that will be encountered during transport. Particular attention should be paid to the facilities at any intermediate stops at airports, etc.
- 2.3 When containers are to be re-used they should be thoroughly cleaned and disinfected before and after use.
- 2.4 The estimated time of arrival should be notified in advance to the consignee, and also the route of the consignment. Adequate arrangements for its prompt collection at the final destination, and for any necessary movement at transit points, should be made in advance.
- 2.5 Should any delay in collection be anticipated, then advance arrangements should be made for the housing, feeding and watering of the animals.
- 2.6 Cash on delivery facilities should not be used.

3. Container

- 3.1 The container should be constructed of wood, or of material of similar strength, and there should be an adequate framework to ensure that it is strong enough to house the animals and to withstand the handling involved during transport.
- 3.2 There should be no sharp edges or projections on the inside surfaces of the container.
- 3.3 If any wood preservative or paint is used on the container, care should be taken to ensure that this is not toxic or a skin irritant.
- 3.4 The floor of the container should be solid.
- 3.5 The walls should be of chainlink or welded mesh.
- 3.6 The roof should be of suitable mesh or chainlink.



- 3.7 Care should be taken to ensure that the mesh holes are of a size which prevents the animals from coming into contact with persons handling the container.
- 3.8 There should be a sliding door of adequate size at each end of the container, constructed of material of similar strength to the rest of the container and provided with a secure fastening device.
- 3.9 Suitable gripper bars or lifting handles should be provided.
- 3.10 Spacer bars of adequate size should be fitted to all walls, roof and base of the container, to ensure that there is a free flow of air to the animals in the event of stacking or close stowing of cargo.

4. Labelling and documentation

Durable, waterproof labels should be provided as follows:

- 4.1 "LIVE ANIMALS – DO NOT TIP" on all sides and top.
- 4.2 "THIS WAY UP", with arrows indicating the top, on all sides.
- 4.3 Consignor's and consignee's name, address and telephone number. Box numbers should not be used as the sole address.
- 4.4 Detailed list of contents: number of animals; scientific name and common names used in the exporting and importing countries.

- 4.5 Temperature range required.
- 4.6 Required diet, and feeding and watering instructions.
- 4.7 Details of any sedation given.
- 4.8 Date on which animals were crated for transport.
- 4.9 Official stamp of carrier showing date of his receipt of consignment.

Durable, waterproof means of containing the following documents and other essential information should be firmly attached to the container:

- 4.10 Duplicate of consignor's and consignee's name, address and telephone number.
- 4.11 Duplicate list of contents as in 4.4.
- 4.12 Copies of relevant export and import licences.
- 4.13 Copy of valid health certificate issued in accordance with the requirements of the importing country.
- 4.14 Duplicate information regarding temperature range, and feeding and watering.
- 4.15 Duplicate information regarding any sedation given.

Mm/6 – Mice, rats, cavies and other small mammals

1. General welfare

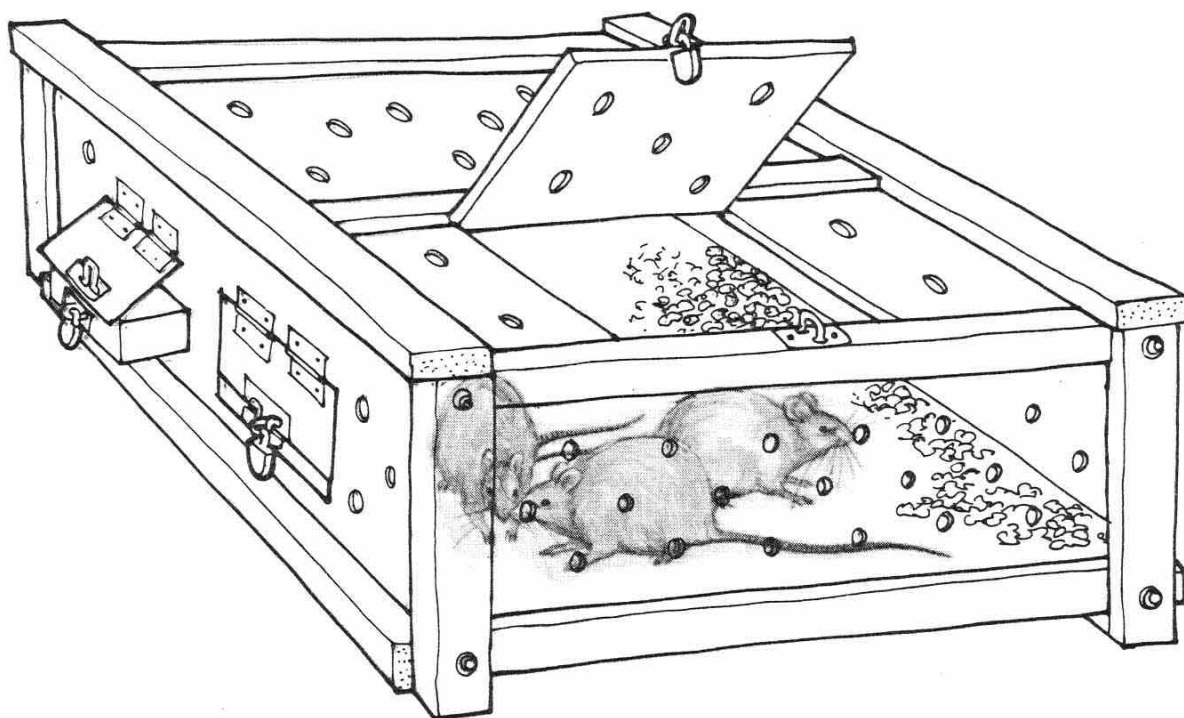
- 1.1 Animals should have priority over merchandise.
- 1.2¹ Only animals in good health should be transported.
- 1.3 Animals of different species should not be transported in the same container. Each compartment of a properly partitioned container may be considered as a separate container.
- 1.4 Unless animals of the same species are known to be compatible with one another, they should not be transported in the same container.
- 1.5 Animals should be disturbed as little as possible.
- 1.6 If filter containers are used, they should not be opened during transport. In an emergency, however, the animals should be humanely destroyed and a record kept.
- 1.7 When normal containers are used, any animals that have become sick or that have been injured during transport should receive veterinary treatment as soon as possible and, if necessary, should be humanely destroyed. A record of any such occurrences should be kept.
- 1.8 When normal containers are used, sick or dead animals should be removed from containers, when feasible, and a record kept.
- 1.9 To avoid cross-infection, and for health and hygiene reasons, human contact with animals should be avoided, and they should not be housed near foodstuffs or in places to which unauthorized persons have access.
- 1.10 No animal should be transported with radioactive material or other substances dangerous to health.
- 1.11 Containers should be secured to the aircraft, rail wagon, lorry or ship to avoid any possible movement, and should at all times be maintained in a horizontal position.

¹ *Exceptional circumstances may arise which justify departure from this recommendation.*

2. Advance arrangements for transport

- 2.1 All possible precautions should be taken in advance to ensure that animals are not subjected to extremes of temperature or to draughts. This would necessitate planning their movement with due regard to the climatic conditions natural to them, and to the conditions prevailing at their final destination, and also those that will be encountered during transport. Particular attention should be paid to the facilities at any intermediate stops at airports, etc.
- 2.2 Containers should be destroyed after use.
- 2.3 The estimated time of arrival should be notified in advance to the consignee, and also the route of the consignment. Adequate arrangements for its prompt collection at the final destination, and for any necessary movement at transit points, should be made in advance.
- 2.4 Should any delay in collection be anticipated, then advance arrangements should be made for the housing, feeding and watering of the animals.
- 2.5 Cash on delivery facilities should not be used.

3. Container



- 3.1 The container should be constructed of mesh-lined wood, or material of similar strength, and should be strong enough to house the animals, and to withstand the handling involved during transport.

- 3.2 There should be no sharp edges or projections on the inside surfaces of the container.
- 3.3 If any wood preservative or paint is used on the container, care should be taken to ensure that this is not toxic or a skin irritant.
- 3.4 The floor of the container should be leakproof.
- 3.5 The container should have a sufficient quantity of absorbent material on the floor and, in the case of a filter container, this should be sterile.
- 3.6 Filter containers should have adequate viewing windows.
- 3.7 Suitable containers for food and water should be provided to sustain the animals for a minimum of 48 hours.
- 3.8 Adequate ventilation should be provided by means of a suitable number and size of filters, or by suitable holes in walls and roof, covered with a fine mesh.
- 3.9 Spacer bars of adequate size should be fitted to all walls, roof and base of the container, to ensure that there is a free flow of air to the animals in the event of stacking or close stowing of cargo.

4. Labelling and documentation

Durable, waterproof labels should be provided as follows:

- 4.1 "LIVE ANIMALS – DO NOT TIP" on all sides and top.
- 4.2 "THIS WAY UP", with arrows indicating the top, on all sides.
- 4.3 Consignor's and consignee's name, address and telephone number. Box numbers should not be used as the sole address.
- 4.4 Detailed list of contents: number of animals; scientific name and common names used in the exporting and importing countries.
- 4.5 Temperature range required.
- 4.6 Required diet, and feeding and watering instructions.
- 4.7 Date on which animals were crated for transport.
- 4.8 Official stamp of carrier showing date of his receipt of consignment.

Durable, waterproof means of containing the following documents and other essential information should be firmly attached to the container:

- 4.9 Duplicate of consignor's and consignee's name, address and telephone number.
- 4.10 Duplicate list of contents as in 4.4.
- 4.11 Copies of relevant export and import licences.
- 4.12 Copy of valid health certificate issued in accordance with the requirements of the importing country.
- 4.13 Duplicate information regarding temperature range, and feeding and watering.

Av/1 – Water birds and large birds of non-perching habit

1. General welfare

- 1.1 Birds should have priority over merchandise.
- 1.2¹ Only birds in good health should be transported.
- 1.3¹ Birds should not be sedated.
- 1.4 Birds should be transported in semi-darkness.
- 1.5¹ Birds of different species should not be transported in the same container.
- 1.6 Unless birds of the same species are known to be compatible with one another, they should not be transported in the same container.
- 1.7 Birds should be disturbed as little as possible.
- 1.8 Birds that have become sick, or that have been injured during transport, should receive veterinary treatment as soon as possible and, if necessary, should be humanely destroyed. A record of any such occurrences should be kept.
- 1.9 Sick or dead birds should be removed from containers, when feasible, and a record kept.
- 1.10 Any rest periods prescribed by a veterinarian should be complied with.
- 1.11 The frequency and type of feeding and watering natural to the birds should be adhered to during transport, and should be clearly specified on the labelling.
- 1.12 To avoid cross-infection, and for health and hygiene reasons, human contact with birds should be avoided, and they should not be housed near foodstuffs or in places to which unauthorized persons have access.
- 1.13 No bird should be transported with radioactive material or other substances dangerous to health.
- 1.14 Containers should be secured to the aircraft, rail wagon, lorry or ship to avoid any possible movement, and should at all times be maintained in a horizontal position.

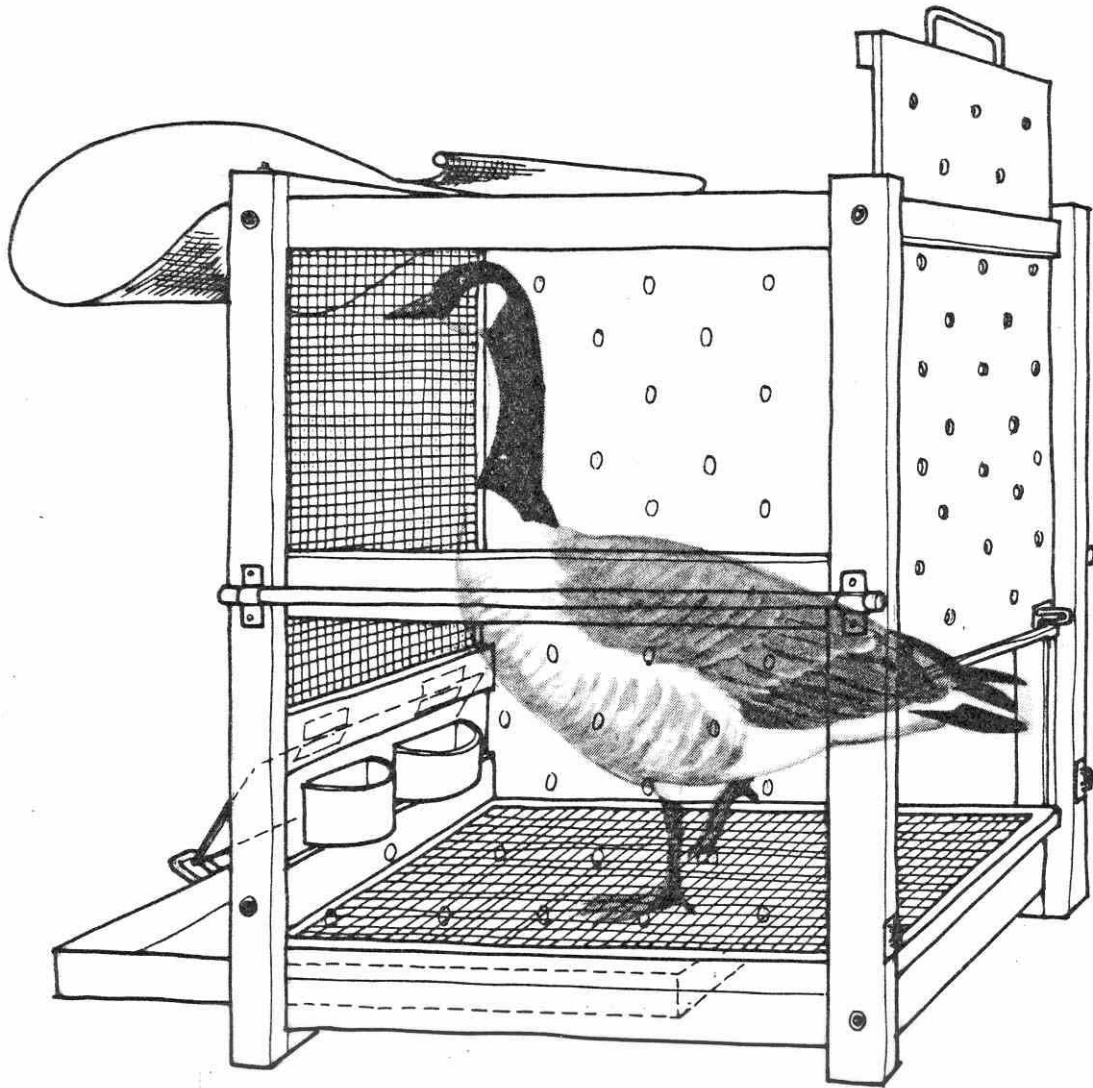
¹ *Exceptional circumstances may arise which justify departure from this recommendation.*

2. Advance arrangements for transport

- 2.1 There should be an appropriate period for holding and conditioning of birds prior to shipment, during which they should be introduced to their containers progressively.
- 2.2 All possible precautions should be taken in advance to ensure that birds are not subjected to extremes of temperature or to draughts. This would necessitate planning their movement with due regard to the climatic conditions natural to them, and to the conditions prevailing at their final destination, and also those that will be encountered during transport. Particular attention should be paid to the facilities at any intermediate stops at airports, etc.
- 2.3 When containers are to be re-used they should be thoroughly cleaned and disinfected before and after use.
- 2.4 The estimated time of arrival should be notified in advance to the consignee, and also the route of the consignment. Adequate arrangements for its prompt collection at the final destination, and for any necessary movement at transit points, should be made in advance.
- 2.5 Should any delay in collection be anticipated, then advance arrangements should be made for the housing, feeding and watering of the birds.
- 2.6 Cash on delivery facilities should not be used.

3. Container

- 3.1 The container should be constructed of wood, or of material of similar strength, and there should be an adequate framework to ensure that it is strong enough to house the birds and to withstand the handling involved during transport.
- 3.2 There should be no sharp edges or projections on the inside surfaces of the container.
- 3.3 If any wood preservative or paint is used on the container, care should be taken to ensure that this is not toxic or a skin irritant.
- 3.4 An additional floor of suitable mesh should be provided, above a removable, waterproof tray with a sufficient quantity of absorbent material.
- 3.5 The front should be of mesh or bars of suitable strength, and so designed that the birds are not able to come into contact with persons handling the containers.
- 3.6 A burlap or similar cover should be fitted to the front in such a manner that it may be removed when necessary, care being taken not to interfere with the ventilation.



- 3.7 There should be a sliding door of adequate size, constructed of similar material to the rest of the container, and provided with a secure fastening device which is not accessible to the birds.
- 3.8 Separate flange-sided troughs for food and water, removable from the outside, and with provision for closing the trough access during removal, should be provided.
- 3.9 To ensure an adequate flow of air at all times, there should be additional ventilation by means of holes of suitable size in the walls of the container. These holes should be of a size which prevents the birds from coming into contact with persons handling the container.
- 3.10 Suitable lifting handles or gripper bars should be fitted to all but the smallest box.
- 3.11 Spacer bars of adequate size should be fitted to all walls, roof and base of the container, to ensure that there is a free flow of air to the birds in the event of stacking or close stowing of cargo.

4. Labelling and documentation

Durable, waterproof labels should be provided as follows:

- 4.1 "LIVE BIRDS – DO NOT TIP" on all sides and top.
- 4.2 "THIS WAY UP", with arrows indicating the top, on all sides.
- 4.3 Consignor's and consignee's name, address and telephone number. Box numbers should not be used as the sole address.
- 4.4 Detailed list of contents: number of birds; scientific name and common names used in the exporting and importing countries.
- 4.5 Temperature range required.
- 4.6 Required diet, and feeding and watering instructions.
- 4.7 Date on which birds were crated for transport.
- 4.8 Official stamp of carrier showing date of his receipt of consignment.

Durable, waterproof means of containing the following documents and other essential information should be firmly attached to the container:

- 4.9 Duplicate of consignor's and consignee's name, address and telephone number.
- 4.10 Duplicate list of contents as in 4.4.
- 4.11 Copies of relevant export and import licences.
- 4.12 Copy of valid health certificate issued in accordance with the requirements of the importing country.
- 4.13 Duplicate information regarding temperature range, and feeding and watering.

Av/2 – Parrots, pigeons, passerines, near-passerines

1. General welfare

- 1.1 Birds should have priority over merchandise.
- 1.2¹ Only birds in good health should be transported.
- 1.3¹ Birds should not be sedated.
- 1.4 Birds should be transported in semi-darkness.
- 1.5¹ Birds of different species should not be transported in the same container.
- 1.6 Unless birds of the same species are known to be compatible with one another, they should not be transported in the same container.
- 1.7 Birds should be disturbed as little as possible.
- 1.8 Birds that have become sick, or that have been injured during transport, should receive veterinary treatment as soon as possible and, if necessary, should be humanely destroyed. A record of any such occurrences should be kept.
- 1.9 Sick or dead birds should be removed from containers, when feasible, and a record kept.
- 1.10 Any rest periods prescribed by a veterinarian should be complied with.
- 1.11 The frequency and type of feeding and watering natural to the birds should be adhered to during transport, and should be clearly specified on the labelling.
- 1.12 To avoid cross-infection, and for health and hygiene reasons, human contact with birds should be avoided, and they should not be housed near foodstuffs or in places to which unauthorized persons have access.
- 1.13 No bird should be transported with radioactive material or other substances dangerous to health.
- 1.14 Containers should be secured to the aircraft, rail wagon, lorry or ship to avoid any possible movement, and should at all times be maintained in a horizontal position.

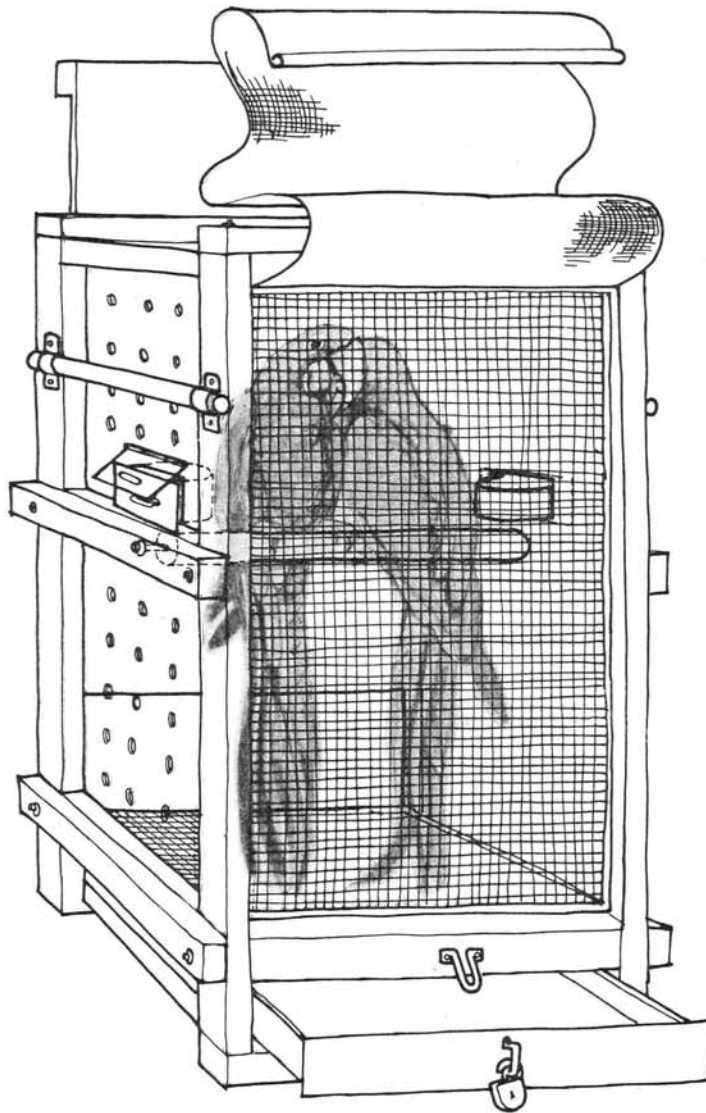
¹ *Exceptional circumstances may arise which justify departure from this recommendation.*

2. Advance arrangements for transport

- 2.1 There should be an appropriate period for holding and conditioning of birds, prior to shipment.
- 2.2 All possible precautions should be taken in advance to ensure that birds are not subjected to extremes of temperature or to draughts. This would necessitate planning their movement with due regard to the climatic conditions natural to them, and to the conditions prevailing at their final destination, and also those that will be encountered during transport. Particular attention should be paid to the facilities at any intermediate stops at airports, etc.
- 2.3 When containers are to be re-used they should be thoroughly cleaned and disinfected before and after use.
- 2.4 The estimated time of arrival should be notified in advance to the consignee, and also the route of the consignment. Adequate arrangements for its prompt collection at the final destination, and for any necessary movement at transit points, should be made in advance.
- 2.5 Should any delay in collection be anticipated, then advance arrangements should be made for the housing, feeding and watering of the birds.
- 2.6 Cash on delivery facilities should not be used.

3. Container

- 3.1 The container should be constructed of wood, or of material of similar strength, and there should be an adequate framework to ensure that it is strong enough to house the birds and to withstand the handling involved during transport.
- 3.2 There should be no sharp edges or projections on the inside surfaces of the container.
- 3.3 If any wood preservative or paint is used on the container, care should be taken to ensure that this is not toxic or a skin irritant.
- 3.4 An additional floor of suitable mesh should be provided, above a removable, waterproof tray with a sufficient quantity of absorbent material.
- 3.5 The front should be of mesh or bars of suitable strength, and so designed that the birds are not able to come into contact with persons handling the containers.
- 3.6 A burlap or similar cover should be fitted to the front in such a manner that it may be removed when necessary, care being taken not to interfere with the ventilation.



- 3.7 There should be a sliding door of adequate size, constructed of similar material to the rest of the container, and provided with a secure fastening device, which is not accessible to the birds. A cloth sleeve or other device should be used to prevent escape.
- 3.8 Suitable perches should be fitted in such a way as to ensure that all the birds may perch in a natural position, with clear headroom and without their tail feathers touching the floor of the container. There should not, however, be room for attempted flight.
- 3.9 Separate flange-sided troughs for food and water, removable from the outside, and with provision for closing the trough access during removal, should be provided. It may be necessary, with some species, to provide a number of food troughs.
- 3.10 Nectar-eating birds should be provided with feeding bottles which should be fitted with the spouts projecting into the container, and should be accessible for replenishment purposes.

- 3.11 To ensure an adequate flow of air at all times, there should be additional ventilation by means of holes of suitable size in the walls of the container. These holes should be of a size which prevents the birds from coming into contact with persons handling the container. Care should be taken to avoid draughts, especially with tropical birds.
- 3.12 Suitable lifting handles or gripper bars should be fitted to all but the smallest box.
- 3.13 Spacer bars of adequate size should be fitted to all walls, roof and base of the container, to ensure that there is a free flow of air to the birds in the event of stacking or close stowing of cargo.

4. Labelling and documentation

Durable, waterproof labels should be provided as follows:

- 4.1 "LIVE BIRDS – DO NOT TIP" on all sides and top.
- 4.2 "THIS WAY UP", with arrows indicating the top, on all sides.
- 4.3 Consignor's and consignee's name, address and telephone number. Box numbers should not be used as the sole address.
- 4.4 Detailed list of contents: number of birds; scientific name and common names used in the exporting and importing countries.
- 4.5 Temperature range required.
- 4.6 Required diet, and feeding and watering instructions.
- 4.7 Date on which birds were crated for transport.
- 4.8 Official stamp of carrier showing date of his receipt of consignment.

Durable, waterproof means of containing the following documents and other essential information should be firmly attached to the container:

- 4.9 Duplicate of consignor's and consignee's name, address and telephone number.
- 4.10 Duplicate list of contents as in 4.4.
- 4.11 Copies of relevant export and import licences.
- 4.12 Copy of valid health certificate issued in accordance with the requirements of the importing country.
- 4.13 Duplicate information regarding temperature range, and feeding and watering.

Av/3 – Birds of prey and owls

1. General welfare

- 1.1 Birds should have priority over merchandise.
- 1.2¹ Only birds in good health should be transported.
- 1.3¹ Birds should not be sedated.
- 1.4 Birds should be transported in semi-darkness.
- 1.5 Birds of different species should not be transported in the same container.
- 1.6 Unless birds of the same species are known to be compatible with one another, they should not be transported in the same container.
- 1.7 Birds should be disturbed as little as possible.
- 1.8 Birds that have become sick, or that have been injured during transport, should receive veterinary treatment as soon as possible and, if necessary, should be humanely destroyed. A record of any such occurrences should be kept.
- 1.9 Sick or dead birds should be removed from containers, when feasible, and a record kept.
- 1.10 Any rest periods prescribed by a veterinarian should be complied with.
- 1.11 The frequency and type of feeding and watering natural to the birds should be adhered to during transport, and should be clearly specified on the labelling.
- 1.12 To avoid cross-infection, and for health and hygiene reasons, human contact with birds should be avoided, and they should not be housed near foodstuffs or in places to which unauthorized persons have access.
- 1.13 No bird should be transported with radioactive material or other substances dangerous to health.
- 1.14 Containers should be secured to the aircraft, rail wagon, lorry or ship to avoid any possible movement, and should at all times be maintained in a horizontal position.

2. Advance arrangements for transport

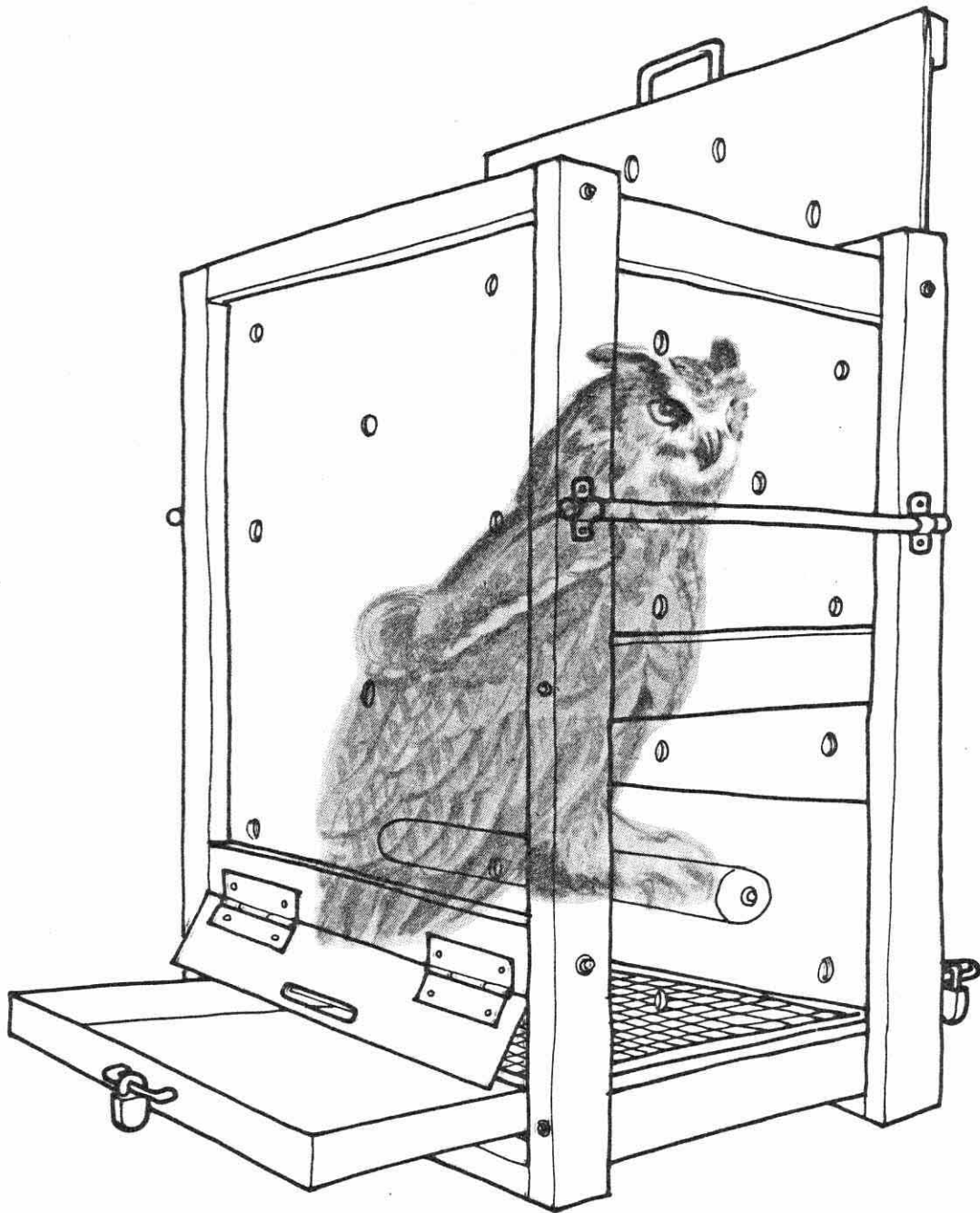
- 2.1 There should be an appropriate period for holding and conditioning of birds prior to shipment, during which they should be introduced to their containers progressively.

¹ *Exceptional circumstances may arise which justify departure from this recommendation.*

- 2.2 All possible precautions should be taken in advance to ensure that birds are not subjected to extremes of temperature or to draughts. This would necessitate planning their movement with due regard to the climatic conditions natural to them, and to the conditions prevailing at their final destination, and also those that will be encountered during transport. Particular attention should be paid to the facilities at any intermediate stops at airports, etc.
- 2.3 When containers are to be re-used they should be thoroughly cleaned and disinfected before and after use.
- 2.4 The estimated time of arrival should be notified in advance to the consignee, and also the route of the consignment. Adequate arrangements for its prompt collection at the final destination, and for any necessary movement at transit points, should be made in advance.
- 2.5 Should any delay in collection be anticipated, then advance arrangements should be made for the housing, feeding and watering of the birds.
- 2.6 Cash on delivery facilities should not be used.

3. Container

- 3.1 The container should be constructed of wood, or of material of similar strength, and there should be an adequate framework to ensure that it is strong enough to house the birds and to withstand the handling involved during transport.
- 3.2 There should be no sharp edges or projections on the inside surfaces of the container.
- 3.3 If any wood preservative or paint is used on the container, care should be taken to ensure that this is not toxic or a skin irritant.
- 3.4 An additional floor of suitable mesh should be provided, above a removable, waterproof tray with a sufficient quantity of absorbent material.
- 3.5 There should be a sliding door of adequate size, constructed of similar material to the rest of the container, and provided with a secure fastening device which is not accessible to the birds.
- 3.6 If the birds being transported are of perching habit, suitable perches should be fitted in such a way as to ensure that all the birds may perch in a natural position, with clear headroom and without their tail feathers touching the floor of the container. There should not, however, be room for attempted flight.
- 3.7 Separate flange-sided troughs for food and water, removable from the outside, and with provision for closing the trough access during removal, should be provided.



- 3.8 To ensure an adequate flow of air at all times, there should be additional ventilation by means of holes of suitable size in the walls of the container. These holes should be close to the floor to enable the birds to see their food, and should be of a size which prevents the birds from coming into contact with persons handling the container.
- 3.9 Suitable lifting handles or gripper bars should be fitted to all but the smallest box.
- 3.10 Spacer bars of adequate size should be fitted to all walls, roof and base of the container, to ensure that there is a free flow of air to the birds in the event of stacking or close stowing of cargo.

4. Labelling and documentation

Durable, waterproof labels should be provided as follows:

- 4.1 "LIVE BIRDS – DO NOT TIP" on all sides and top.
- 4.2 "THIS WAY UP", with arrows indicating the top, on all sides.
- 4.3 Consignor's and consignee's name, address and telephone number. Box numbers should not be used as the sole address.
- 4.4 Detailed list of contents: number of birds; scientific name and common names used in the exporting and importing countries.
- 4.5 Temperature range required.
- 4.6 Required diet, and feeding and watering instructions.
- 4.7 Date on which birds were crated for transport.
- 4.8 Official stamp of carrier showing date of his receipt of consignment.

Durable, waterproof means of containing the following documents and other essential information should be firmly attached to the container:

- 4.9 Duplicate of consignor's and consignee's name, address and telephone number.
- 4.10 Duplicate list of contents as in 4.4.
- 4.11 Copies of relevant export and import licences.
- 4.12 Copy of valid health certificate issued in accordance with the requirements of the importing country.
- 4.13 Duplicate information regarding temperature range, and feeding and watering.

Rp/1 – Freshwater terrapins and turtles, marine turtles

1. General welfare

- 1.1 Reptiles should have priority over merchandise.
- 1.2¹ Only reptiles in good health should be transported.
- 1.3 Reptiles should not be sedated.
- 1.4¹ Reptiles of different species should not be transported in the same compartment or bag.
- 1.5 Unless reptiles of the same species are known to be compatible with one another, they should not be transported in the same compartment or bag.
- 1.6 Reptiles should be left undisturbed during transport.
- 1.7² Reptiles that have become sick or that have been injured during transport should receive veterinary treatment as soon as possible and, if necessary, should be humanely destroyed. A record of any such occurrences should be kept.
- 1.8² Sick or dead reptiles should be removed from containers, when feasible, and a record kept.
- 1.9 No feeding should be necessary during transport.
- 1.10 To avoid cross-infection, and for health and hygiene reasons, human contact with reptiles should be avoided, and they should not be housed near foodstuffs or in places to which unauthorized persons have access.
- 1.11 No reptile should be transported with radioactive material or other substances dangerous to health.
- 1.12 Containers should be secured to the aircraft, rail wagon, lorry or ship to avoid any possible movement, and should at all times be maintained in a horizontal position.

¹ *Exceptional circumstances may arise which justify departure from this recommendation.*

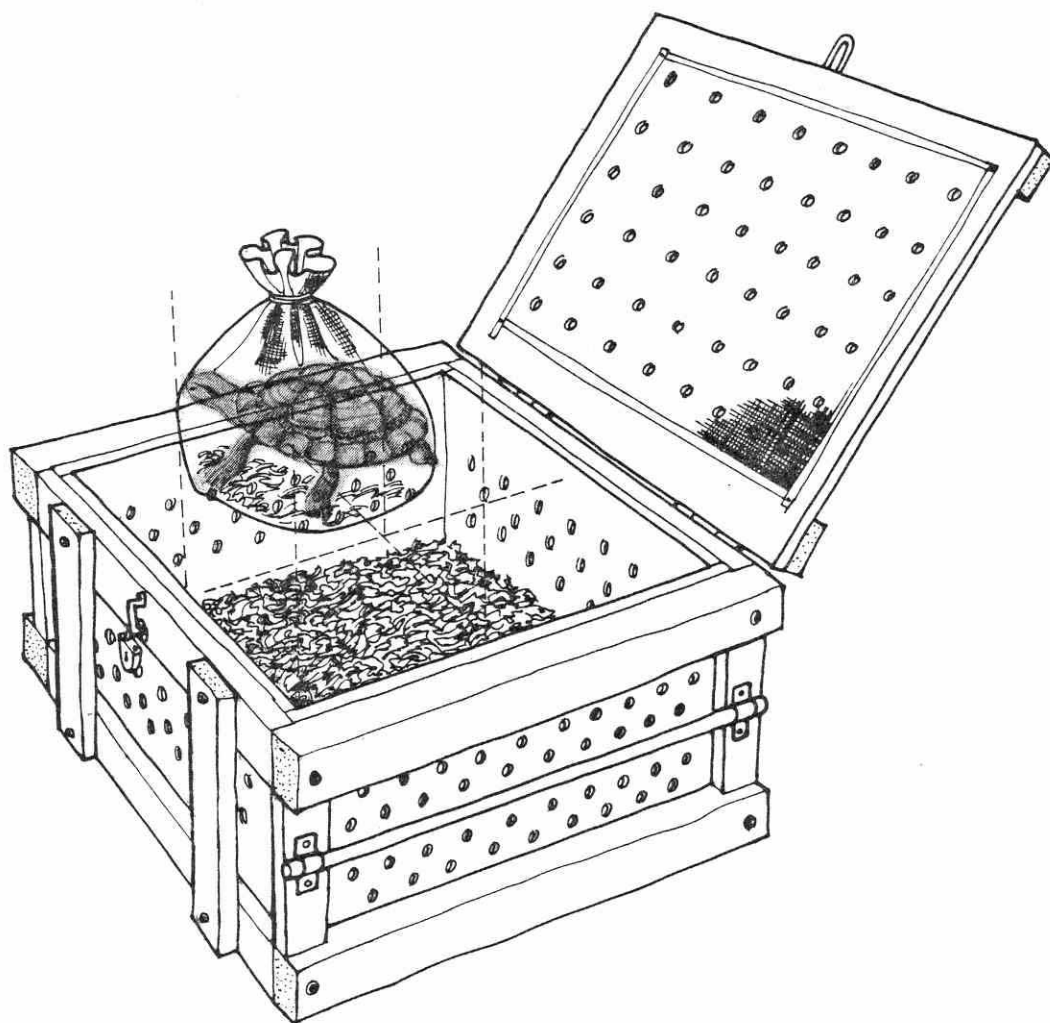
² *Reptiles are frequently in a state of torpor and, therefore, the advice of someone qualified in handling reptiles should be obtained before any action is taken in cases where there is any doubt as to the condition of the reptiles.*

2. Advance arrangements for transport

- 2.1 All possible precautions should be taken in advance to ensure that reptiles are not subjected to extremes of temperature or to draughts. This would necessitate planning their movement with due regard to the climatic conditions natural to them, and to the conditions prevailing at their final destination, and also those that will be encountered during transport. Particular attention should be paid to the facilities at any intermediate stops at airports, etc.
- 2.2 Any bags or other packing material should be destroyed after use; when containers are to be re-used they should be thoroughly cleaned and disinfected before and after use.
- 2.3 The estimated time of arrival should be notified in advance to the consignee, and also the route of the consignment. Adequate arrangements for its prompt collection at the final destination, and for any necessary movement at transit points, should be made in advance.
- 2.4 Should any delay in collection be anticipated, then advance arrangements should be made for the housing of the reptiles.
- 2.5 Cash on delivery facilities should not be used.

3. Container

- 3.1 The container should be constructed of wood, hardboard, expanded polystyrene, or other material of similar strength, and there should be an adequate framework to ensure that it is strong enough to house the reptiles and to withstand the handling involved during transport.
- 3.2 There should be no sharp edges or projections on the inside surfaces of the container.
- 3.3 If any wood preservative or paint is used on the container, care should be taken to ensure that this is not toxic or a skin irritant.
- 3.4 The container may be made up of a number of compartments.
- 3.5 Whether the container is made up of a number of compartments, or is a single unit, it should be only just large enough to house the reptile or reptiles being transported.
- 3.6 The container should be sufficiently shallow as to prevent the reptiles from injuring themselves in the event of a violent movement of the container.
- 3.7 There should be a lid completely covering the container, fitted with a secure fastening device.



- 3.8 To ensure an adequate flow of air at all times, ventilation holes should be provided in all walls and the lid of the container. These ventilation holes should be covered with fine gauze.
- 3.9 Suitable gripper bars or lifting handles should be provided.
- 3.10 Spacer bars of adequate size should be fitted to all walls, lid and base of the container, to ensure that there is a free flow of air to the reptiles in the event of stacking or close stowing of cargo.

4. Packing

- 4.1 The reptile, except for large specimens, should be placed in a suitable bag with a sufficient quantity of damp sphagnum moss or foam chippings.
- 4.2 In the case of small specimens, several may be packed in the same bag.
- 4.3 Salt water should be used for dampening the packing material, when appropriate.
- 4.4 The bags should be firmly attached to the container.

5. Labelling and documentation

Durable, waterproof labels should be provided as follows:

- 5.1 "LIVE REPTILES – DO NOT TIP" on all sides and top.
- 5.2 "THIS WAY UP", with arrows indicating the top, on all sides.
- 5.3 Consignor's and consignee's name, address and telephone number. Box numbers should not be used as the sole address.
- 5.4 Detailed list of contents: number of reptiles; scientific name and common names used in the exporting and importing countries.
- 5.5 Temperature range required.
- 5.6 Date on which reptiles were packed for transport.
- 5.7 Official stamp of carrier showing date of his receipt of consignment.

Durable, waterproof means of containing the following documents and other essential information should be firmly attached to the container:

- 5.8 Duplicate of consignor's and consignee's name, address and telephone number.
- 5.9 Duplicate list of contents as in 5.4.
- 5.10 Copies of relevant export and import licences.
- 5.11 Copy of valid health certificate issued in accordance with the requirements of the importing country.
- 5.12 Duplicate information regarding temperature range required.

Rp/2 – Crocodiles, alligators, caimans, gavials

1. General welfare

- 1.1 Reptiles should have priority over merchandise.
- 1.2¹ Only reptiles in good health should be transported.
- 1.3 Reptiles should not be sedated.
- 1.4 Reptiles of different species should not be transported in the same compartment or bag.
- 1.5 Unless reptiles of the same species are known to be compatible with one another, they should not be transported in the same compartment or bag.
- 1.6 Reptiles should be left undisturbed during transport.
- 1.7² Reptiles that have become sick or that have been injured during transport should receive veterinary treatment as soon as possible and, if necessary, should be humanely destroyed. A record of any such occurrences should be kept.
- 1.8² Sick or dead reptiles should be removed from containers, when feasible, and a record kept.
- 1.9 No feeding should be necessary during transport.
- 1.10 To avoid cross-infection, and for health and hygiene reasons, human contact with reptiles should be avoided, and they should not be housed near foodstuffs or in places to which unauthorized persons have access.
- 1.11 No animal should be transported with radioactive material or other substances dangerous to health.
- 1.12 Containers should be secured to the aircraft, rail wagon, lorry or ship to avoid any possible movement, and should at all times be maintained in a horizontal position.

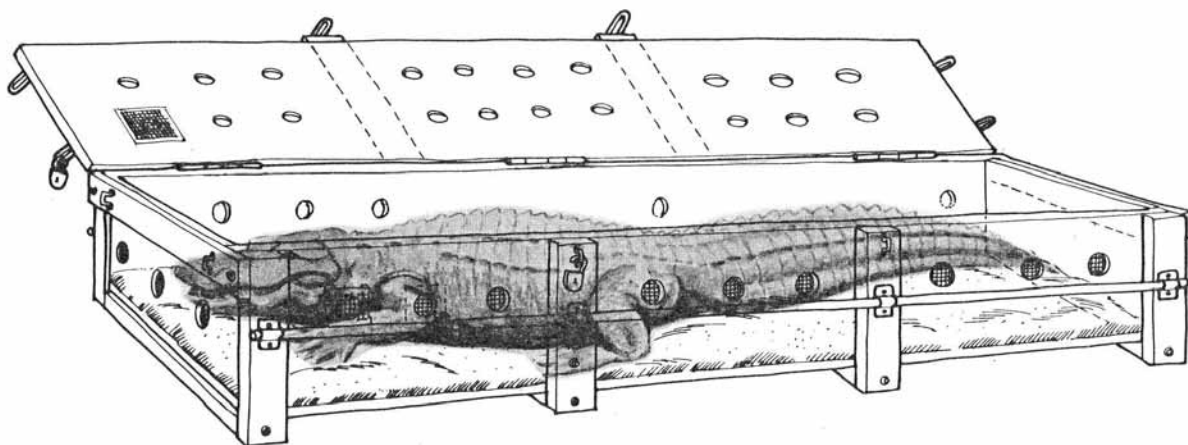
¹ *Exceptional circumstances may arise which justify departure from this recommendation.*

² *Reptiles are frequently in a state of torpor and, therefore, the advice of someone qualified in handling reptiles should be obtained before any action is taken in cases where there is any doubt as to the condition of the reptiles.*

2. Advance arrangements for transport

- 2.1 All possible precautions should be taken in advance to ensure that reptiles are not subjected to extremes of temperature or to draughts. This would necessitate planning their movement with due regard to the climatic conditions natural to them, and to the conditions prevailing at their final destination, and also those that will be encountered during transport. Particular attention should be paid to the facilities at any intermediate stops at airports, etc.
- 2.2 Any bags or other packing material should be destroyed after use; when containers are to be re-used they should be thoroughly cleaned and disinfected before and after use.
- 2.3 The estimated time of arrival should be notified in advance to the consignee, and also the route of the consignment. Adequate arrangements for its prompt collection at the final destination, and for any necessary movement at transit points, should be made in advance.
- 2.4 Should any delay in collection be anticipated, then advance arrangements should be made for the housing of the reptiles.
- 2.5 Cash on delivery facilities should not be used.

3. Container



- 3.1 The container should be constructed of wood, hardboard, expanded polystyrene, or other material of similar strength, and there should be an adequate framework to ensure that it is strong enough to house the reptiles and to withstand the handling involved during transport. For large reptiles the floor should be padded.
- 3.2 There should be no sharp edges or projections on the inside surfaces of the container. Gavials should have their noses protected.
- 3.3 If any wood preservative or paint is used on the container, care should be taken to ensure that this is not toxic or a skin irritant.

- 3.4 The container may be designed to house one specimen only, or may be made up of a number of compartments, provided that the overall size is such that it may be handled without difficulty.
- 3.5 The container or compartment should be of a size which prevents undue movement of the reptiles, and thus minimizes the risk of injury in the event of violent movement of the container.
- 3.6 There should be a lid completely covering the container, fitted with a secure fastening device.
- 3.7 To ensure an adequate flow of air at all times, ventilation holes should be provided in all walls and the lid of the container. These ventilation holes should be covered with fine gauze.
- 3.8 Suitable lifting handles or gripper bars should be fitted and, in the case of heavily loaded containers, facilities for the attachment of crane slings and handling by fork-lift should also be provided.
- 3.9 Spacer bars of adequate size should be fitted to all walls, lid and base of the container, to ensure that there is a free flow of air to the reptiles in the event of stacking or close stowing of cargo.

4. Packing

- 4.1 If feasible, the reptile should be placed in a suitable bag with a sufficient quantity of damp sphagnum moss or foam chippings.
- 4.2 In the case of small specimens, several may be packed in the same bag.
- 4.3 The bags should be firmly attached to the container.

5. Labelling and documentation

Durable, waterproof labels should be provided as follows:

- 5.1 "LIVE REPTILES – DO NOT TIP" on all sides and top.
- 5.2 "THIS WAY UP", with arrows indicating the top, on all sides.
- 5.3 Consignor's and consignee's name, address and telephone number. Box numbers should not be used as the sole address.
- 5.4 Detailed list of contents: number of reptiles, scientific name and common names used in the exporting and importing countries.
- 5.5 Temperature range required.
- 5.6 Date on which reptiles were packed for transport.

5.7 Official stamp of carrier showing date of his receipt of consignment.

Durable, waterproof means of containing the following documents and other essential information should be firmly attached to the container:

5.8 Duplicate of consignor's and consignee's name, address and telephone number.

5.9 Duplicate list of contents as in 5.4.

5.10 Copies of relevant export and import licences.

5.11 Copy of valid health certificate issued in accordance with the requirements of the importing country.

5.12 Duplicate information regarding temperature range required.

Rp/3 – Tortoises and land turtles, snakes, lizards

1. General welfare

- 1.1 Reptiles should have priority over merchandise.
- 1.2¹ Only reptiles in good health should be transported.
- 1.3 Reptiles should not be sedated.
- 1.4¹ Reptiles of different species should not be transported in the same compartment or bag.
- 1.5 Unless reptiles of the same species are known to be compatible with one another, they should not be transported in the same compartment or bag.
- 1.6 Reptiles should be left undisturbed during transport.
- 1.7² Reptiles that have become sick or that have been injured during transport should receive veterinary treatment as soon as possible and, if necessary, should be humanely destroyed. A record of any such occurrences should be kept.
- 1.8² Sick or dead reptiles should be removed from containers, when feasible, and a record kept.
- 1.9 No feeding should be necessary during transport.
- 1.10 To avoid cross-infection, and for health and hygiene reasons, human contact with reptiles should be avoided, and they should not be housed near foodstuffs or in places to which unauthorized persons have access.
- 1.11 No animal should be transported with radioactive material or other substances dangerous to health.
- 1.12 Containers should be secured to the aircraft, rail wagon, lorry or ship to avoid any possible movement, and should at all times be maintained in a horizontal position.

2. Advance arrangements for transport

- 2.1 All possible precautions should be taken in advance to ensure that reptiles are not subjected to extremes of temperature or to draughts. This would necessitate planning their movement with due regard to the climatic conditions natural to them, and to the conditions prevailing at their final destination, and also those

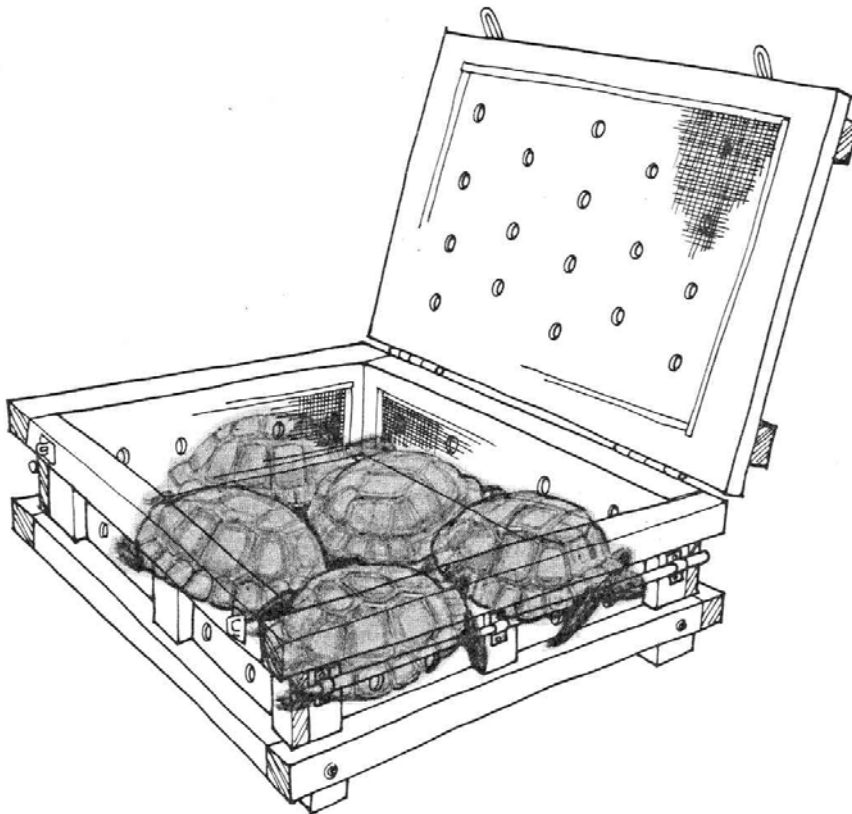
¹ *Exceptional circumstances may arise which justify departure from this recommendation.*

² *Reptiles are frequently in a state of torpor and, therefore, the advice of someone qualified in handling reptiles should be obtained before any action is taken in cases where there is any doubt as to the condition of the reptiles.*

that will be encountered during transport. Particular attention should be paid to the facilities at any intermediate stops at airports, etc.

- 2.2 Any bags or other packing material should be destroyed after use; when containers are to be re-used they should be thoroughly cleaned and disinfected before and after use.
- 2.3 The estimated time of arrival should be notified in advance to the consignee, and also the route of the consignment. Adequate arrangements for its prompt collection at the final destination, and for any necessary movement at transit points, should be made in advance.
- 2.4 Should any delay in collection be anticipated, then advance arrangements should be made for the housing of the reptiles.
- 2.5 Cash on delivery facilities should not be used.

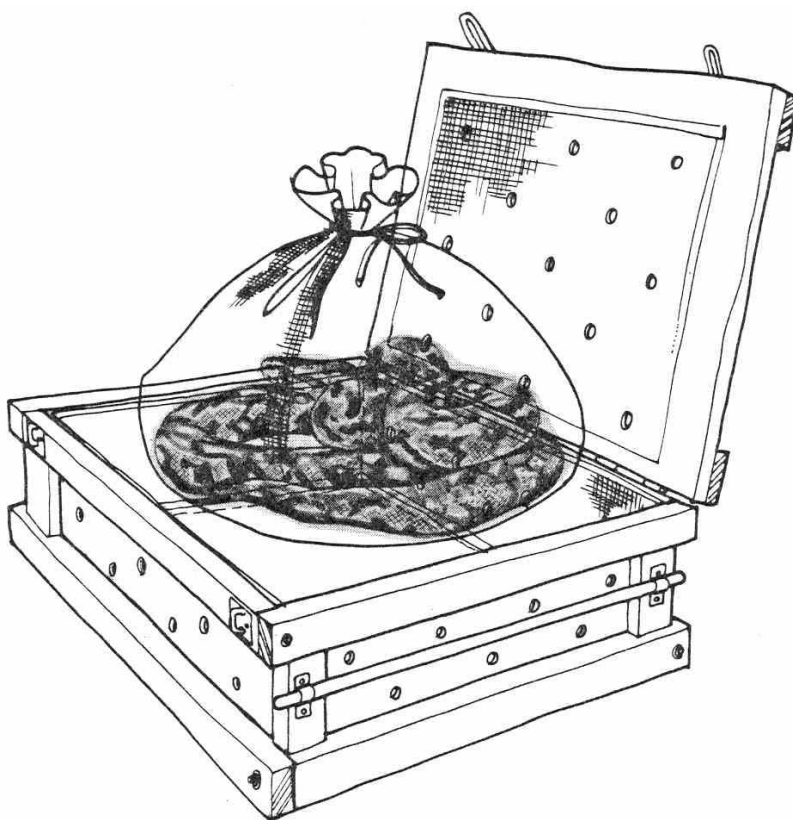
3. Container



- 3.1 The container should be constructed of wood, hardboard, expanded polystyrene, or other material of similar strength, and there should be an adequate framework to ensure that it is strong enough to house the reptiles and to withstand the handling involved during transport.
- 3.2 There should be no sharp edges or projections on the inside surfaces of the container.

- 3.3 If any wood preservative or paint is used on the container, care should be taken to ensure that this is not toxic or a skin irritant.
- 3.4 The container may comprise a number of compartments, provided that the overall size of the container is such that it may be handled without difficulty.
- 3.5 The container should be sufficiently shallow to prevent reptiles, such as tortoises, from climbing on top of one another, and should be of a size which prevents undue movement of the reptiles, and hence minimizes the risk of injury due to violent movement of the container.
- 3.6 There should be a lid completely covering the container, fitted with a secure fastening device.
- 3.7 To ensure an adequate flow of air at all times, ventilation holes should be provided in all walls and the lid of the container. These ventilation holes should be covered with fine gauze.
- 3.8 Suitable gripper bars or lifting handles should be provided.
- 3.9 Spacer bars of adequate size should be fitted to all walls, lid and base of the container, to ensure that there is a free flow of air to the reptiles in the event of stacking or close stowing of cargo.

4. Packing



- 4.1 Snakes and lizards should be placed in suitable bags which are then sealed and labelled "POISONOUS" or "NON-POISONOUS REPTILES" as appropriate. However, bags are not suitable for general transportation of chameleons (*Chamaeleonidae*) and lizards of a spiny nature, such as some agamas (*Agamidae*). The first mentioned travel better in containers furnished with a network of rigid perches and the others in containers furnished with soft, loose material into which they can burrow.
- 4.2 In the case of small specimens, several may be packed in the same bag.
- 4.3 If necessary, dampened sphagnum moss or foam chippings may be packed around the reptiles – certain species may require salt water.
- 4.4 The bags should be firmly attached to the container.

5. Labelling and documentation

Durable, waterproof labels should be provided as follows:

- 5.1 "LIVE REPTILES – DO NOT TIP", "POISONOUS" or "NON-POISONOUS", as appropriate, on all sides and top.
- 5.2 "THIS WAY UP", with arrows indicating the top, on all sides.
- 5.3 Consignor's and consignee's name, address and telephone number. Box numbers should not be used as the sole address.
- 5.4 Detailed list of contents: number of reptiles; scientific name and common names used in the exporting and importing countries.
- 5.5 Temperature range required.
- 5.6 Date on which reptiles were packed for transport.
- 5.7 Official stamp of carrier showing date of his receipt of consignment.

Durable, waterproof means of containing the following documents and other essential information should be firmly attached to the container:

- 5.8 Duplicate of consignor's and consignee's name, address and telephone number.
- 5.9 Duplicate list of contents as in 5.4.
- 5.10 Copies of relevant export and import licences.
- 5.11 Copy of valid health certificate issued in accordance with the requirements of the importing country.
- 5.12 Duplicate information regarding temperature range required.

Aph/1 – Amphibians, aquatic forms

1. General welfare

- 1.1 Animals should have priority over merchandise.
- 1.2¹ Only animals in good health should be transported.
- 1.3 Animals should not be sedated.
- 1.4 Animals of different species should not be transported in the same container.
- 1.5 Unless animals of the same species are known to be compatible with one another, they should not be transported in the same container.
- 1.6 Animals should be left undisturbed during transport.
- 1.7² Animals that have become sick, or that have been injured during transport, should receive veterinary treatment as soon as possible and, if necessary, should be humanely destroyed. A record of any such occurrences should be kept.
- 1.8² Sick or dead animals should be removed from containers, when feasible, and a record kept.
- 1.9 No feeding should be necessary during transport.
- 1.10 To avoid cross-infection, and for health and hygiene reasons, human contact with animals should be avoided. Should it be necessary, in an emergency, to handle them, then the hands should be thoroughly washed immediately afterwards, as the skins of some species are toxic.
- 1.11 To avoid damage to the animals' skins, the hands should be moistened before handling.
- 1.12 No animal should be transported with radioactive material or other substances dangerous to health.
- 1.13 Containers should be secured to the aircraft, rail wagon, lorry or ship to avoid any possible movement, and should at all times be maintained in a horizontal position.

¹ *Exceptional circumstances may arise which justify departure from this recommendation.*

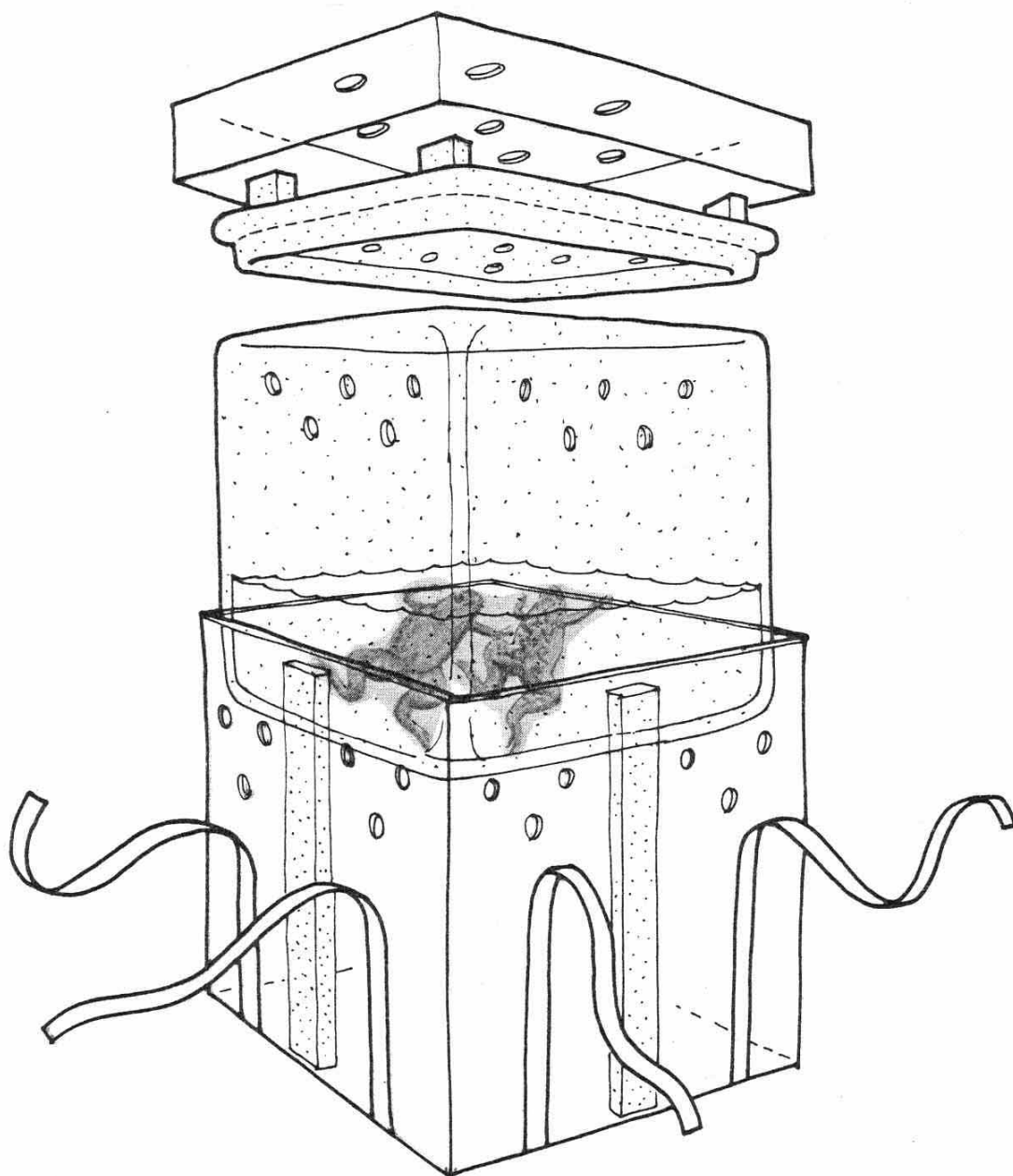
² *Amphibians are frequently in a state of torpor and, therefore, the advice of someone qualified in handling them should be obtained before any action is taken in cases where there is any doubt as to the condition of the animals.*

2. Advance arrangements for transport

- 2.1 All possible precautions should be taken in advance to ensure that animals are not subjected to extremes of temperature. This would necessitate planning their movement with due regard to the climatic conditions natural to them, and to the conditions prevailing at their final destination, and also those that will be encountered during transport. Particular attention should be paid to the facilities at any intermediate stops at airports, etc.
- 2.2 When containers are to be re-used they should be thoroughly cleaned and disinfected before and after use.
- 2.3 The estimated time of arrival should be notified in advance to the consignee, and also the route of the consignment. Adequate arrangements for its prompt collection at the final destination, and for any necessary movement at transit points, should be made in advance.
- 2.4 Should any delay in collection be anticipated, then advance arrangements should be made for the housing of the animals.
- 2.5 Cash on delivery facilities should not be used.

3. Container

- 3.1 The container should be constructed of high density expanded polystyrene, or material with similar insulation properties, and should be entirely leakproof.
- 3.2 The container should be of adequate strength to house the animals, and to withstand the handling involved during transport.
- 3.3 The container should have a well-fitting lid, provided with an adequate size and number of ventilation holes, to ensure that sufficient oxygen circulates in the container.
- 3.4 In order to give additional mechanical strength to the container, this should be placed in a suitable outer box of wood, stout cardboard, or other similar material. This should be designed in such a manner that there is a free flow of air to the ventilation holes in the lid of the container. This may be achieved by packing pieces on the underside of the outer box lid.



4. Packing

- 4.1 In order to minimize pollution of the water, animals should not be fed for 24 hours before shipment.
- 4.2 The container should be filled with water to approximately one quarter of its depth and the animals placed in the water. An alternative method, suitable for many species, is to pack them with pieces of water-soaked sponge.

5. Labelling and documentation

Durable waterproof labels should be provided as follows:

- 5.1 "LIVE AMPHIBIANS – DO NOT TIP" on all sides and top.
- 5.2 "THIS WAY UP", with arrows indicating the top, on all sides.
- 5.3 Consignor's and consignee's name, address and telephone number. Box numbers should not be used as the sole address.
- 5.4 Detailed list of contents: number of animals; scientific name and common names used in the exporting and importing countries.
- 5.5 Temperature range required.
- 5.6 Date on which animals were packed for transport.
- 5.7 Official stamp of carrier showing date of his receipt of consignment.

Durable, waterproof means of containing the following documents and other essential information should be firmly attached to the container:

- 5.8 Duplicate of consignor's and consignee's name, address and telephone number.
- 5.9 Duplicate list of contents as in 5.4.
- 5.10 Copies of relevant export and import licences.
- 5.11 Copy of valid health certificate issued in accordance with the requirements of the importing country.
- 5.12 Duplicate information regarding temperature range required.

Aph/2 – Amphibians, terrestrial forms

1. General welfare

- 1.1 Animals should have priority over merchandise.
- 1.2¹ Only animals in good health should be transported.
- 1.3 Animals should not be sedated.
- 1.4 Animals of different species should not be transported in the same bag.
- 1.5 Unless animals of the same species are known to be compatible with one another, they should not be transported in the same bag.
- 1.6 Animals should be left undisturbed during transport.
- 1.7² Animals that have become sick, or that have been injured during transport, should receive veterinary treatment as soon as possible and, if necessary, should be humanely destroyed. A record of any such occurrences should be kept.
- 1.8² Sick or dead animals should be removed from containers, when feasible, and a record kept.
- 1.9 No feeding should be necessary during transport.
- 1.10 To avoid cross-infection, and for health and hygiene reasons, human contact with animals should be avoided. Should it be necessary, in an emergency, to handle them, then the hands should be thoroughly washed immediately afterwards, as the skins of some species are toxic.
- 1.11 To avoid damage to the animals' skins, the hands should be moistened before handling.
- 1.12 No animal should be transported with radioactive material or other substances dangerous to health.
- 1.13 Containers should be secured to the aircraft, rail wagon, lorry or ship to avoid any possible movement, and should at all times be maintained in a horizontal position.

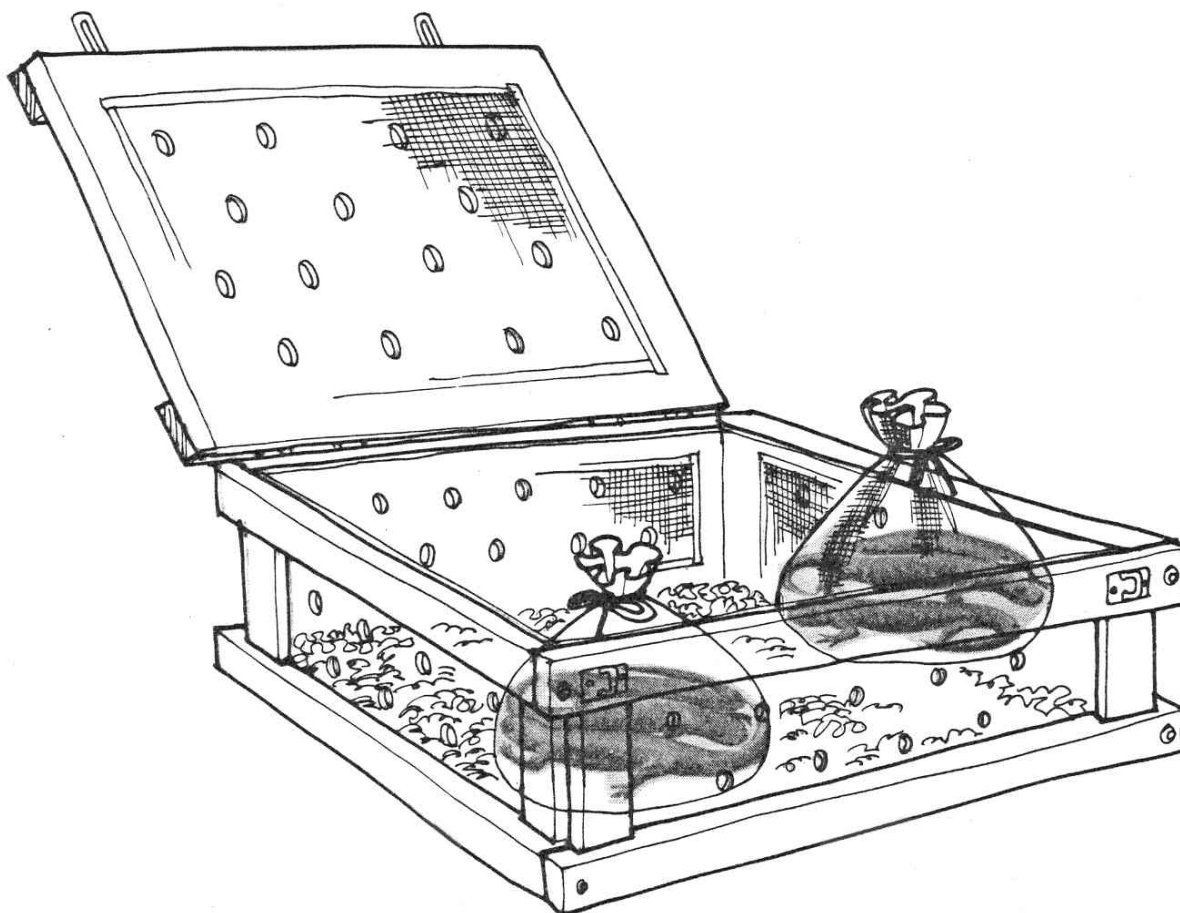
¹ *Exceptional circumstances may arise which justify departure from this recommendation.*

² *Amphibians are frequently in a state of torpor and, therefore, the advice of someone qualified in handling them should be obtained before any action is taken in cases where there is any doubt as to the condition of the animals.*

2. Advance arrangements for transport

- 2.1 All possible precautions should be taken in advance to ensure that animals are not subjected to extremes of temperature. This would necessitate planning their movement with due regard to the climatic conditions natural to them, and to the conditions prevailing at their final destination, and also those that will be encountered during transport. Particular attention should be paid to the facilities at any intermediate stops at airports, etc.
- 2.2 Any bags or other packing material should be destroyed after use; when containers are to be re-used they should be thoroughly cleaned and disinfected before and after use.
- 2.3 The estimated time of arrival should be notified in advance to the consignee, and also the route of the consignment. Adequate arrangements for its prompt collection at the final destination, and for any necessary movement at transit points, should be made in advance.
- 2.4 Should any delay in collection be anticipated, then advance arrangements should be made for the housing of the animals.
- 2.5 Cash on delivery facilities should not be used.

3. Container



- 3.1 The container should be constructed of wood, hardboard, or other material of similar strength, and an adequate framework should be provided to ensure mechanical strength.
- 3.2 The container should be of adequate strength to house the animals, and to withstand the handling involved during transport.
- 3.3 The container should be provided with an adequate number and size of ventilation holes, to ensure a free flow of air to the animals.
- 3.4 Spacer bars of adequate size should be fitted on all walls, roof and base of the container, to ensure that there is a free flow of air to the animals in the event of stacking or close stowing of cargo.

4. Packing

- 4.1 In order to minimize pollution of the packing material, animals should not be fed for 24 hours before shipment.
- 4.2 Animals should be packed in damp sphagnum moss, foam chippings, or other suitable water-retaining material, in bags made of netting, or other loose-weave material, that will allow a free flow of air.
- 4.3 The number of animals packed in each bag should be such that excessive movement is prevented, but also that there is no danger of crushing or of asphyxiation.
- 4.4 Very large specimens should be packed in bags singly.

5. Labelling and documentation

Durable, waterproof labels should be provided as follows:

- 5.1 "LIVE ANIMALS – DO NOT TIP" on all sides and top.
- 5.2 "THIS WAY UP", with arrows indicating the top, on all sides.
- 5.3 Consignor's and consignee's name, address and telephone number. Box numbers should not be used as the sole address.
- 5.4 Detailed list of contents: number of animals; scientific name and common names used in the exporting and importing countries.
- 5.5 Temperature range required.
- 5.6 Date on which animals were packed for transport.
- 5.7 Official stamp of carrier showing date of his receipt of consignment.

Durable, waterproof means of containing the following documents and other essential information should be firmly attached to the container:

- 5.8 Duplicate of consignor's and consignee's name, address and telephone number.
- 5.9 Duplicate list of contents as in 5.4.
- 5.10 Copies of relevant export and import licences.
- 5.11 Copies of valid health certificate issued in accordance with the requirements of the importing country.
- 5.12 Duplicate information regarding temperature range required.

Ps/1 – Fishes, except those species that cannot be contained in polythene bags

1. General welfare

- 1.1 Fishes should have priority over merchandise.
- 1.2¹ Only fishes in good health should be transported.
- 1.3 Fishes should not be sedated.
- 1.4 Fishes of different species should not be transported in the same bag or container.
- 1.5 Unless fishes of the same species are known to be compatible with one another, they should not be transported in the same bag or container.
- 1.6 Fishes should be disturbed as little as possible.
- 1.7 Fishes that have become sick or that have been injured during transport should receive veterinary treatment as soon as possible and, if necessary, should be humanely destroyed. A record of any such occurrences should be kept.
- 1.8 Sick or dead fishes should be removed from containers, when feasible, and a record kept.
- 1.9 Fishes should not be contained for periods in excess of 36 hours, without the water being re-oxygenated and its temperature checked.
- 1.10 To avoid cross-infection, and for health and hygiene reasons, human contact with fishes should be avoided, and they should not be housed near foodstuffs or in places to which unauthorized persons have access.
- 1.11 No fish should be transported with radioactive material or other substances dangerous to health.
- 1.12 Containers should be secured to the aircraft, rail wagon, lorry or ship to avoid any possible movement, and should at all times be maintained in a horizontal position.

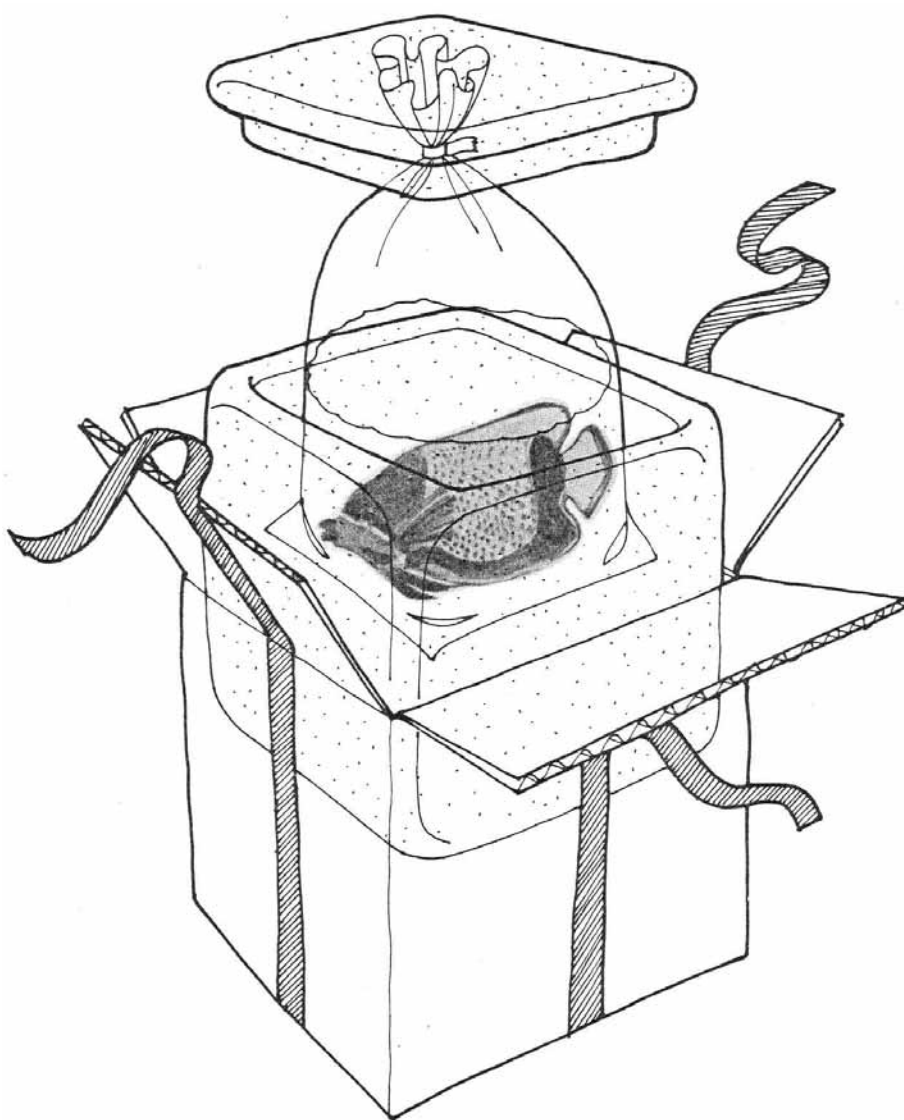
2. Advance arrangements for transport

- 2.1 All possible precautions should be taken in advance to ensure that fishes are not subjected to extremes of temperature. This would necessitate planning their movement with due regard to the climatic conditions natural to them, and to the conditions prevailing at their final destination, and also those that will be encountered during transport. Particular attention should be paid to the facilities at any intermediate stops at airports, etc.

¹ *Exceptional circumstances may arise which justify departure from this recommendation.*

- 2.2 Containers should be destroyed after use.
- 2.3 The estimated time of arrival should be notified in advance to the consignee, and also the route of the consignment. Adequate arrangements for its prompt collection at the final destination, and for any necessary movement at transit points, should be made in advance.
- 2.4 Should any delay in collection be anticipated, then advance arrangements should be made for the housing, feeding and care of the fishes.
- 2.5 Cash on delivery facilities should not be used.

3. Container



- 3.1 The container should be constructed of suitable, strong, high-density, expanded polystyrene, or material with similar strength and insulating properties.

- 3.2 An outer container of suitable strong cardboard or wood, or other material of similar strength, should be provided to ensure that the container is strong enough to house the fishes and to withstand the handling involved during transport.
- 3.3 Adequate precautions should be taken to ensure that the container is leakproof.

4. Packing

- 4.1 In order to minimize pollution of the water, fishes should not be fed for 24 hours prior to shipment.
- 4.2 The fishes should be placed in plastic bags which should then be filled with sufficient water, fresh or salt according to species being shipped, while ensuring that there is no risk of lack of oxygen. The bags should then be sealed. Labyrinth and other air breather specimens require a 50/50 air/oxygen mix, not pure oxygen as this can be fatal in such specimens. Some fishes with spines may be transported safely by using two polythene bags, one inside the other, with a thickness of paper between them. Bag should not be inflated hard.
- 4.3 The plastic bags should be placed in the containers described in 3.1 and 3.2.
- 4.4 A quantity of spare plastic bags should be packed in the top of the container, for use in an emergency.
- 4.5 If the species being transported requires a low temperature, ice should be added to the water as necessary.
- 4.6 The container should be securely taped or banded.

5. Labelling and documentation

Durable, waterproof labels should be provided as follows:

- 5.1 "LIVE FISH – DO NOT TIP OR DROP" on all sides and top.
- 5.2 "THIS WAY UP", with arrows indicating the top, on all sides. "TOXIC" or "POISONOUS" where applicable.
- 5.3 Consignor's and consignee's name, address and telephone number. Box numbers should not be used as the sole address.
- 5.4 Detailed list of contents: number of fishes, scientific name and common names used in the exporting and importing countries; whether fresh or saltwater species.
- 5.5 Temperature range required.
- 5.6 Date on which fishes were packed for transport.
- 5.7 Official stamp of carrier showing date of his receipt of consignment.

Durable, waterproof means of containing the following documents and other essential information should be firmly attached to the container:

- 5.8 Duplicate of consignor's and consignee's name, address and telephone number.
- 5.9 Duplicate list of contents as in 5.4.
- 5.10 Copies of relevant export and import licences.
- 5.11 Copy of valid health certificate issued in accordance with the requirements of the importing country.
- 5.12 Duplicate information regarding temperature range required.

Ps/2 – Fishes that would damage polythene bags

1. General welfare

- 1.1 Fishes should have priority over merchandise.
- 1.2¹ Only fishes in good health should be transported.
- 1.3 Fishes should not be sedated.
- 1.4 Only one fish should be transported in each compartment or container.
- 1.5 Fishes should be disturbed as little as possible.
- 1.6 Fishes that have become sick or that have been injured during transport should receive veterinary treatment as soon as possible and, if necessary, should be humanely destroyed. A record of any such occurrences should be kept.
- 1.7 Sick or dead fishes should be removed from containers, when feasible, and a record kept.
- 1.8 Fishes should not be contained for periods in excess of 36 hours, without the water being re-oxygenated and its temperature checked.
- 1.9 To avoid cross-infection, and for health and hygiene reasons, human contact with fishes should be avoided, and they should not be housed near foodstuffs or in places to which unauthorized persons have access.
- 1.10 No fish should be transported with radioactive material or other substances dangerous to health.
- 1.11 Containers should be secured to the aircraft, rail wagon, lorry or ship to avoid any possible movement, and should at all times be maintained in a horizontal position.

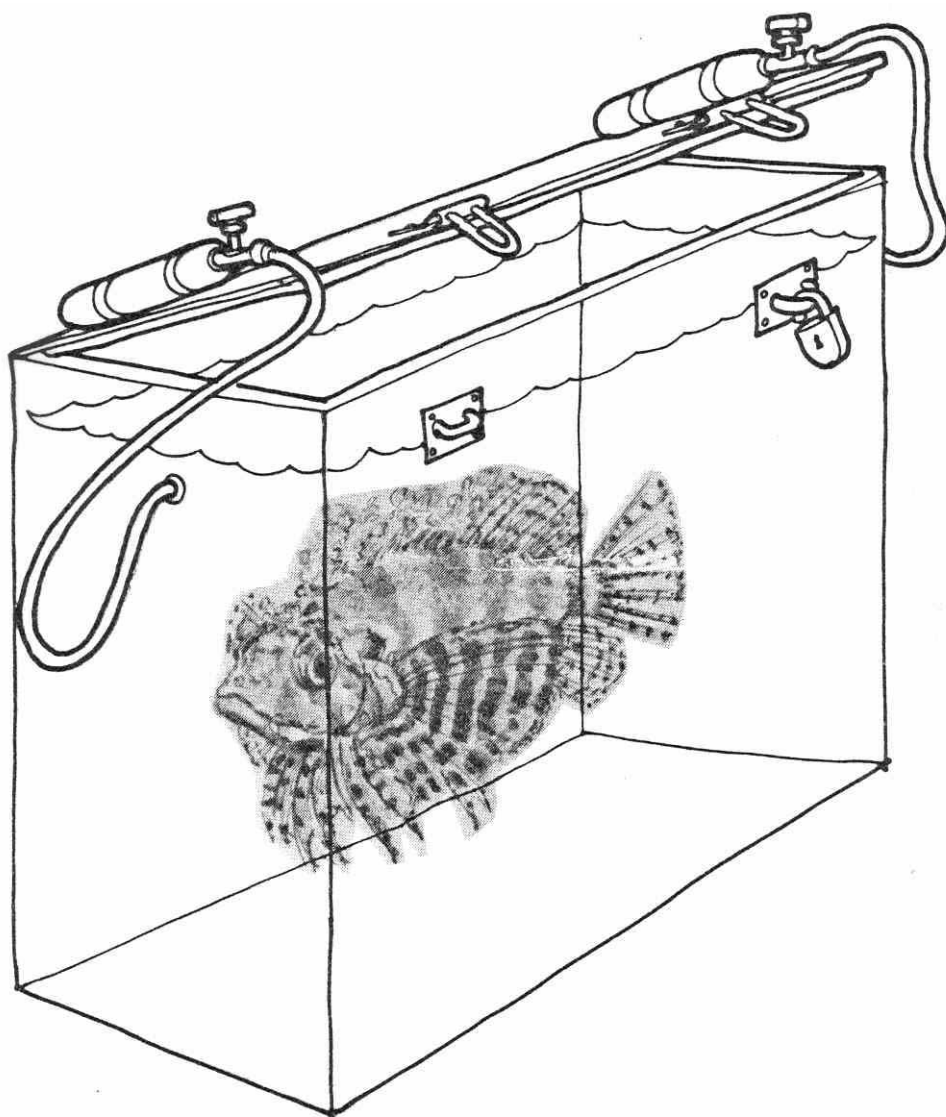
2. Advance arrangements for transport

- 2.1 All possible precautions should be taken in advance to ensure that fishes are not subjected to extremes of temperature. This would necessitate planning their movement with due regard to the climatic conditions natural to them, and to the conditions prevailing at their final destination, and also those that will be encountered during transport. Particular attention should be paid to the facilities at any intermediate stops at airports, etc.
- 2.2 When containers are to be re-used they should be thoroughly cleaned and disinfected before and after use, care being taken in the type of disinfectant used.

¹ *Exceptional circumstances may arise which justify departure from this recommendation.*

- 2.3 The estimated time of arrival should be notified in advance to the consignee, and also the route of the consignment. Adequate arrangements for its prompt collection at the final destination, and for any necessary movement at transit points, should be made in advance.
- 2.4 Should any delay in collection be anticipated, then advance arrangements should be made for the housing, feeding and care of the fishes.
- 2.5 Cash on delivery facilities should not be used.

3. Container



- 3.1 The container should be constructed of suitable gauge, rustproof metal and should be completely watertight. In certain circumstances, glassfibre containers would be more satisfactory.

- 3.2 The container should be designed to house one specimen only, or may be made up of a number of compartments, provided that the overall size is such that it may be handled without difficulty.
- 3.3 A well-fitting lid, extending to the full length and width of the container, and fitted with a secure fastening device, should be provided.
- 3.4 Oxygen bottles should be fitted at each end of the lid of the container, with taps to enable oxygen to be injected when necessary. However, airlines should be consulted regarding use of oxygen bottles and if unacceptable, alternative arrangements should be made for oxygenating.
- 3.5 Suitable lifting handles or gripper bars should be fitted and, in the case of very heavy fish or fishes, facilities for the attachment of crane slings and handling by fork-lift should also be provided.

4. Packing

- 4.1 The fish should be placed in the container with sufficient water to cover it completely. The container should be of a size which allows free movement, and so minimizes the risk of injury to the fish.
- 4.2 After fitting of the container lid, oxygen should be injected from the bottles provided.
- 4.3 If the species being transported requires a low temperature, ice should be added to the water as necessary.

5. Labelling and documentation

Durable, waterproof labels should be provided as follows:

- 5.1 "LIVE FISH – DO NOT TIP OR DROP" on all sides and top.
- 5.2 "THIS WAY UP", with arrows indicating the top, on all sides. "TOXIC" or "POISONOUS" where applicable.
- 5.3 Consignor's and consignee's name, address and telephone number. Box numbers should not be used as the sole address.
- 5.4 Detailed list of contents: number of fishes; scientific name and common names used in the exporting and importing countries; whether fresh or saltwater species.
- 5.5 Temperature range required.
- 5.6 Date on which fishes were packed for transport.
- 5.7 Official stamp of carrier showing date of his receipt of consignment.

Durable, waterproof means of containing the following documents and other essential information should be firmly attached to the container:

- 5.8 Duplicate of consignor's and consignee's name, address and telephone number.
- 5.9 Duplicate list of contents as in 5.4.
- 5.10 Copies of relevant export and import licences.
- 5.11 Copy of valid health certificate issued in accordance with the requirements of the importing country.
- 5.12 Duplicate information regarding temperature range required.

Inv/1 – Aquatic invertebrates

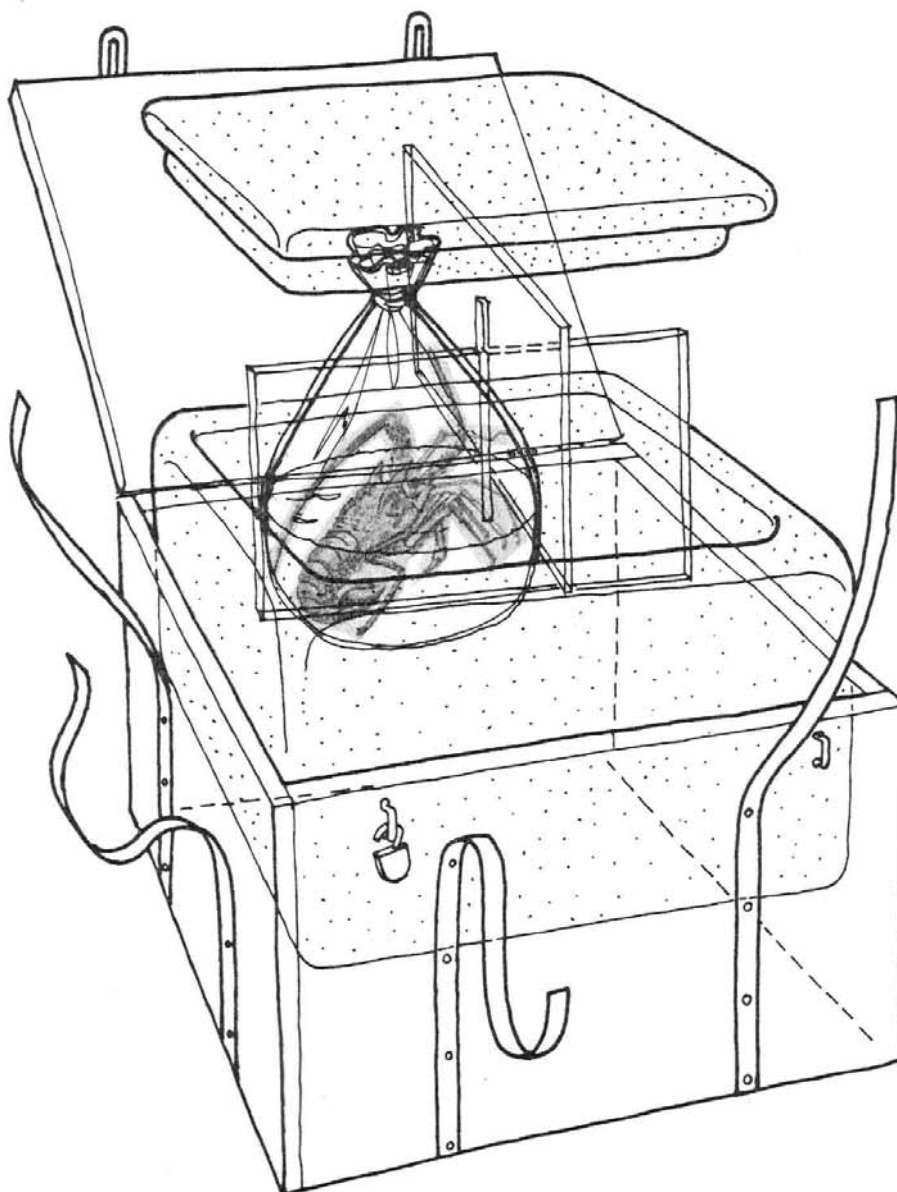
1. General welfare

- 1.1 Animals should have priority over merchandise.
- 1.2 Only animals in good health should be transported.
- 1.3 Animals should not be sedated.
- 1.4 Animals should be left undisturbed during transport.
- 1.5 No feeding should be necessary during transport.
- 1.6 To avoid cross-infection, and for health and hygiene reasons, human contact with animals should be avoided. Should it be necessary, in an emergency, to handle them, then the hands should be thoroughly washed immediately afterwards, as the skins of some species are toxic.
- 1.7 Animals should not be housed near foodstuffs.
- 1.8 No animal should be transported with radioactive material or other substances dangerous to health.
- 1.9 Containers should be secured to the aircraft, rail wagon, lorry or ship to avoid any possible movement, and should at all times be maintained in a horizontal position.

2. Advance arrangements for transport

- 2.1 All possible precautions should be taken in advance to ensure that animals are kept within the temperature range stated on the labelling. This would necessitate planning their movement with due regard to the climatic conditions natural to them, and to the conditions prevailing at their final destination, and also those that will be encountered during transport. Particular attention should be paid to the facilities at any intermediate stops at airports, etc.
- 2.2 Any bags or other packing material should be destroyed after use; when containers are to be re-used they should be thoroughly cleaned and disinfected before and after use.
- 2.3 The estimated time of arrival should be notified in advance to the consignee, and also the route of the consignment. Adequate arrangements for its prompt collection at the final destination, and for any necessary movement at transit points, should be made in advance.
- 2.4 Should any delay in collection be anticipated, then advance arrangements should be made for the housing of the animals.
- 2.5 Cash on delivery facilities should not be used.

3. Container



- 3.1 The container should be constructed of wood, or material of similar strength, and should be strong enough to house the animals, and to withstand the handling involved during transport.
- 3.2 The container may comprise a number of separate compartments, provided that the overall size is such that it may be handled without difficulty.
- 3.3 There should be an inner container constructed of high density expanded polystyrene, in order to provide the necessary heat insulation.
- 3.4 The inner container should have a well fitting lid.
- 3.5 As access to the animals is not normally necessary, the outer container should be securely banded or taped.

4. Packing

- 4.1 Animals should be packed in polythene bags containing one third water and two thirds pure oxygen. The bags should be sealed and placed in a second polythene bag, which should also be sealed.
- 4.2 Undue overcrowding of the animals should be avoided.

5. Labelling and documentation

Durable, waterproof labels should be provided as follows:

- 5.1 "LIVE ANIMALS – DO NOT TIP", "TOXIC" or "POISONOUS" where applicable, on all sides and top.
- 5.2 "THIS WAY UP", with arrows indicating the top, on all sides.
- 5.3 Consignor's and consignee's name, address and telephone number. Box numbers should not be used as the sole address.
- 5.4 Detailed list of contents: number of animals; scientific name and common names used in the exporting and importing countries.
- 5.5 Temperature range required.
- 5.6 Date on which animals were packed for transport.
- 5.7 Official stamp of carrier showing date of his receipt of consignment.

Durable, waterproof means of containing the following documents and other essential information should be firmly attached to the container:

- 5.8 Duplicate of consignor's and consignee's name, address and telephone number.
- 5.9 Duplicate list of contents as in 5.4.
- 5.10 Copies of relevant export and import licences.
- 5.11 Copy of valid health certificate issued in accordance with the requirements of the importing country.
- 5.12 Duplicate information regarding temperature range required.

Inv/2 – Terrestrial invertebrates

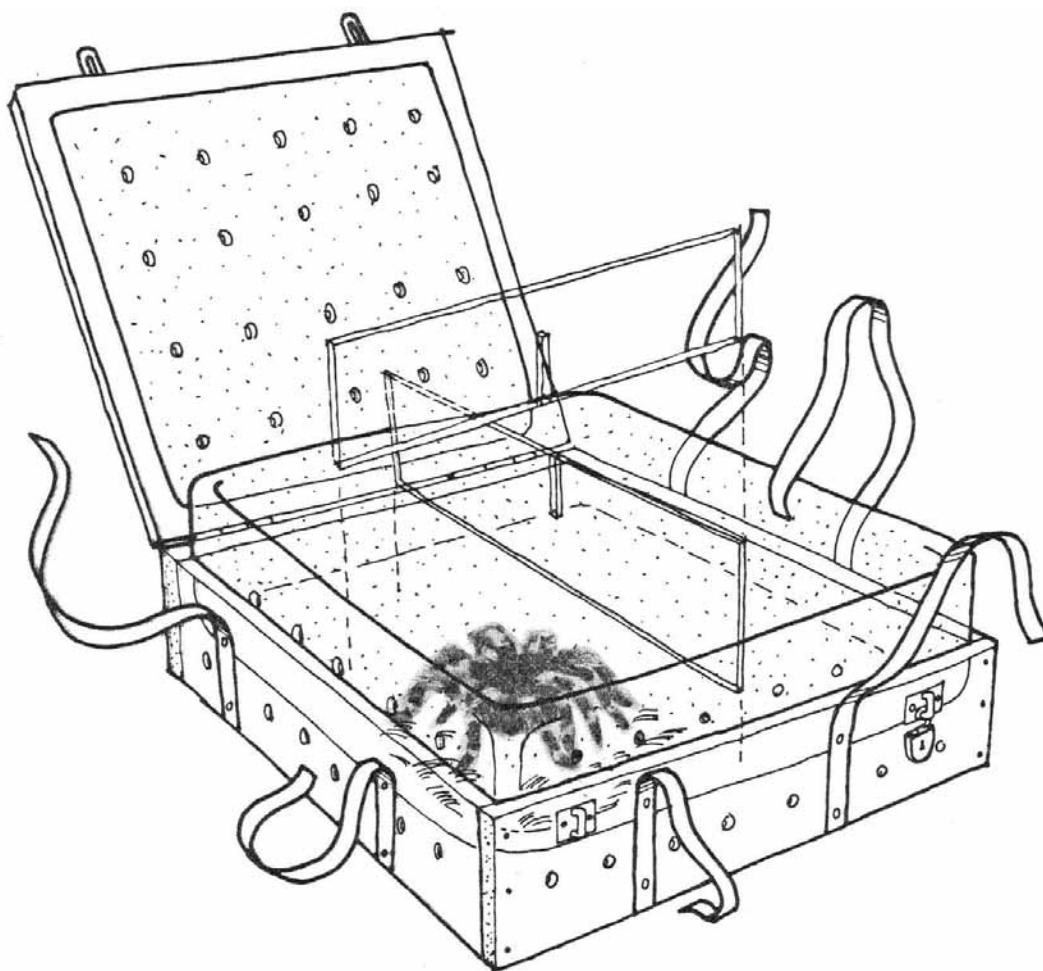
1. General welfare

- 1.1 Animals should have priority over merchandise.
- 1.2 Only animals in good health should be transported.
- 1.3 Animals should not be sedated.
- 1.4 Animals should be left undisturbed during transport.
- 1.5 No feeding should be necessary during transport.
- 1.6 To avoid cross-infection, and for health and hygiene reasons, human contact with animals should be avoided. Should it be necessary, in an emergency, to handle them, then the hands should be thoroughly washed immediately afterwards, as the skins of some species are toxic.
- 1.7 Animals should not be housed near foodstuffs.
- 1.8 No animal should be transported with radioactive material or other substances dangerous to health.
- 1.9 Containers should be secured to the aircraft, rail wagon, lorry or ship to avoid any possible movement, and should at all times be maintained in a horizontal position.

2. Advance arrangements for transport

- 2.1 All possible precautions should be taken in advance to ensure that animals are kept within the temperature range stated on the labelling. This would necessitate planning their movement with due regard to the climatic conditions natural to them, and to the conditions prevailing at their final destination, and also those that will be encountered during transport. Particular attention should be paid to the facilities at any intermediate stops at airports, etc.
- 2.2 Any bags or other packing material should be destroyed after use; when containers are to be re-used they should be thoroughly cleaned and disinfected before and after use.
- 2.3 The estimated time of arrival should be notified in advance to the consignee, and also the route of the consignment. Adequate arrangements for its prompt collection at the final destination, and for any necessary movement at transit points, should be made in advance.
- 2.4 Should any delay in collection be anticipated, then advance arrangements should be made for the housing of the animals.
- 2.5 Cash on delivery facilities should not be used.

3. Container



- 3.1 The container should be constructed of wood, or material of similar strength, and should be strong enough to house the animals, and to withstand the handling involved during transport.
- 3.2 The container may comprise a number of separate compartments, provided that the overall size is such that it may be handled without difficulty. In some cases, polythene bags can be used.
- 3.3 There should be an inner container constructed of high density expanded polystyrene, in order to provide the necessary heat insulation, and lined with plastic or metal, where necessary.
- 3.4 The inner container should have a well fitting lid provided with an adequate number and size of ventilation holes.
- 3.5 The outer container should be so designed that there is a free flow of air to the inner container.
- 3.6 As access to the animals is not normally necessary, the outer container should be securely banded or taped.

4. Packing

- 4.1 Animals should be packed in sphagnum moss, or foam chippings, dampened if appropriate.
- 4.2 Undue overcrowding of the animals should be avoided.

5. Labelling and documentation

Durable, waterproof labels should be provided as follows:

- 5.1 "LIVE ANIMALS – DO NOT TIP", "TOXIC" or "POISONOUS" where applicable, on all sides and top.
- 5.2 "THIS WAY UP", with arrows indicating the top, on all sides.
- 5.3 Consignor's and consignee's name, address and telephone number. Box numbers should not be used as the sole address.
- 5.4 Detailed list of contents: number of animals; scientific name and common names used in the exporting and importing countries.
- 5.5 Temperature range required.
- 5.6 Date on which amphibians were packed for transport.
- 5.7 Official stamp of carrier showing date of his receipt of consignment.

Durable, waterproof means of containing the following documents and other essential information should be firmly attached to the container:

- 5.8 Duplicate of consignor's and consignee's name, address and telephone number.
- 5.9 Duplicate list of contents as in 5.4.
- 5.10 Copies of relevant export and import licences.
- 5.11 Copy of valid health certificate issued in accordance with the requirements of the importing country.
- 5.12 Duplicate information regarding temperature range required.

GUIDELINES FOR TRANSPORTATION OF LIVE PLANT SPECIMENS

1. General

- 1.1 Shipments of live plant material have to comply with applicable international and national phytosanitary regulations. These regulations very often dictate the way in which plant material may be transferred from country to country, they not only cover the form in which the plant specimens may be transferred but also the materials and methods which may be used in packaging.
- 1.2 Plant specimens should be given high priority over non-living items during all phases of transportation and handling.
- 1.3 Generally, only healthy pest-free plant specimens should be transported. Certain plants may need preconditioning to meet environmental conditions to be encountered in transit or at the final destination.
- 1.4 To obtain optimum success in propagation and cultivation, live plant material should be transported as rapidly as possible, which usually means by air, using the pressurised compartment of the aircraft. Except for seeds, surface mail should not be used for long-distance transport of plant specimens.
- 1.5 Quarantine authorities should not impose fumigation treatments what will injure plant specimens, particularly specimens of taxa included in Appendix I of CITES.

2. Advance arrangements for transport

- 2.1 It should be the consignor's responsibility to ensure that adequate advance arrangements are made to care for the plant specimens until the consignee takes them into his charge.
- 2.2 All possible precautions should be taken in advance to ensure that shipment containers are kept dry, and not exposed to desiccating conditions, and that they are not left exposed to the sun, extreme heat, or freezing conditions (temperatures). Plants should be stored in such a manner that they have adequate ventilation.
- 2.3 The estimated time of arrival of the plant specimens should be notified in advance to the consignee, and also the route of the consignment.

3. Packaging

- 3.1 Plant quarantine import requirements of the country of destination should be consulted before plants are packaged and shipped. No packaging materials or methods should be used which would be contrary to those requirements or which would make port of entry inspection or treatment difficult. It should be noted that soil and certain other materials used as growing media or packaging material are prohibited entry into many countries, as a potential source of pests or pathogens.
- 3.2 Package should be strong enough to withstand handling and shipping.
- 3.3 Plant specimens normally should be packaged in a filling compound, in a manner to minimize desiccation, movement, and damage during transport, and to allow adequate ventilation.
- 3.4 Plant specimens normally should not be enclosed in airtight containers; however, propagating material (newly germinated seedlings and tissue cultures) may travel on culture media in tubes or other sealed containers.

4. Labelling and documentation

Durable, waterproof labels or tags should be provided as follows:

- 4.1 "LIVE PLANTS – NO EXTREME HEAT OR COLD" on all sides and top. Label or tag should be completed with appropriate restrictions.
- 4.2 "THIS WAY UP", with arrows indicating the top, should always be used where appropriate.
- 4.3 Consignor's and consignee's name, address and telephone number. Postal box numbers should not be used as the sole address.

Durable, waterproof means of containing the following documents and other essential information should be firmly attached to the package:

- 4.4 Duplicate of consignor's and consignee's name, address and telephone number.
- 4.5 Copies of relevant export and import licences.